

Preface

simi-lar ('SIMI-lar)

**simi-lar makes doors disappear.
Doors, perfectly flush.**



Table of contents

8 - 9

About simi-lar

10 - 15

simi-lar 54
Door custom-made
production

16 - 29

simi-lar 54
Door custom-made
production

30 - 41

simi-lar 54
Door custom-made
production

42 - 48

simi-lar 54
Door custom-made
production

CLOSE-UP

DOOR ELEMENTS

SURFACE VARIETY

FUNCTION CLASSES

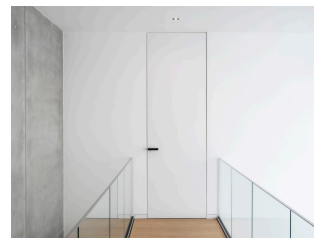
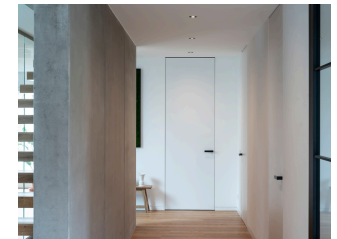
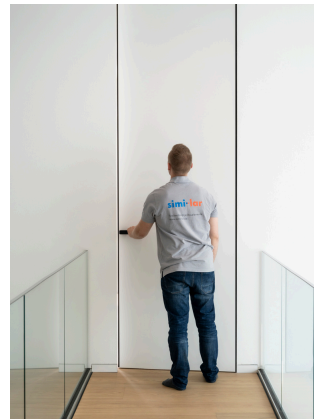


Table of contents

49 - 58

simi-lar 54
Door custom-made
production

TECHNICAL DRAWINGS



59 - 62

simi-lar 44
Door system

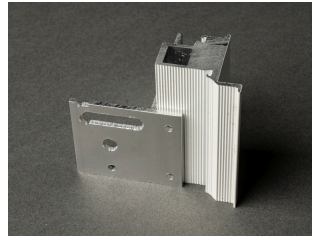
STANDARDIZED ELEMENT



63 - 72

simi-lar 44
Door system

TECHNICAL DRAWINGS



73 - 78

simi-lar
Sliding door system

SPACE SAVING SOLUTION



79 - 82

simi-lar
Sliding door system

TECHNICAL DRAWINGS

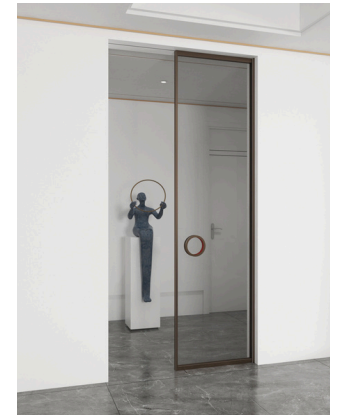
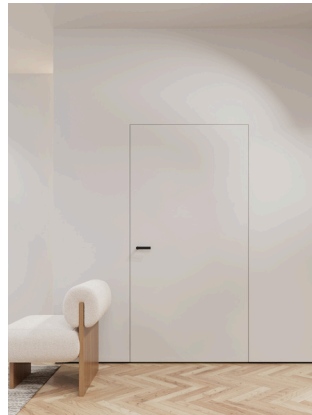


Table of contents

83 - 86

simi-lar
Flush-mounted
skirting boards



87 - 90

simi-lar
Flush-mounted
skirting boards



91 - 94

simi-lar
Shadow gap profile



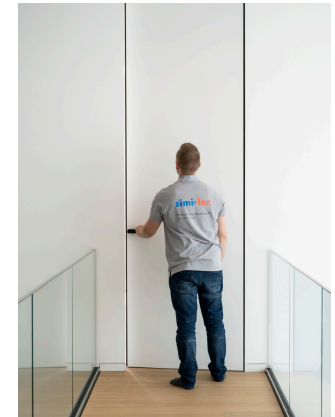
95 - 98

simi-lar
Shadow gap profile



99 - 121

Impressions





About simi-lar

At the centre of simi-lar's heartbeat is the vision of creating perfect lines for doors, skirting boards and shadow gaps in interior design.

Founded by father Andreas and son Felix Barthel, simi-lar represents the combination of aesthetics, precision and quality.

Our components are not only functional, but also an expression of where innovation meets craftsmanship.

simi-lar makes doors disappear.

Doors, perfectly flush.





simi-lar
Door system

Close-up

simi-lar Opening variants



Pull



When closed, the appearance of both variants is identical. This is illustrated on page 53.

simi-lar Opening variants



Push

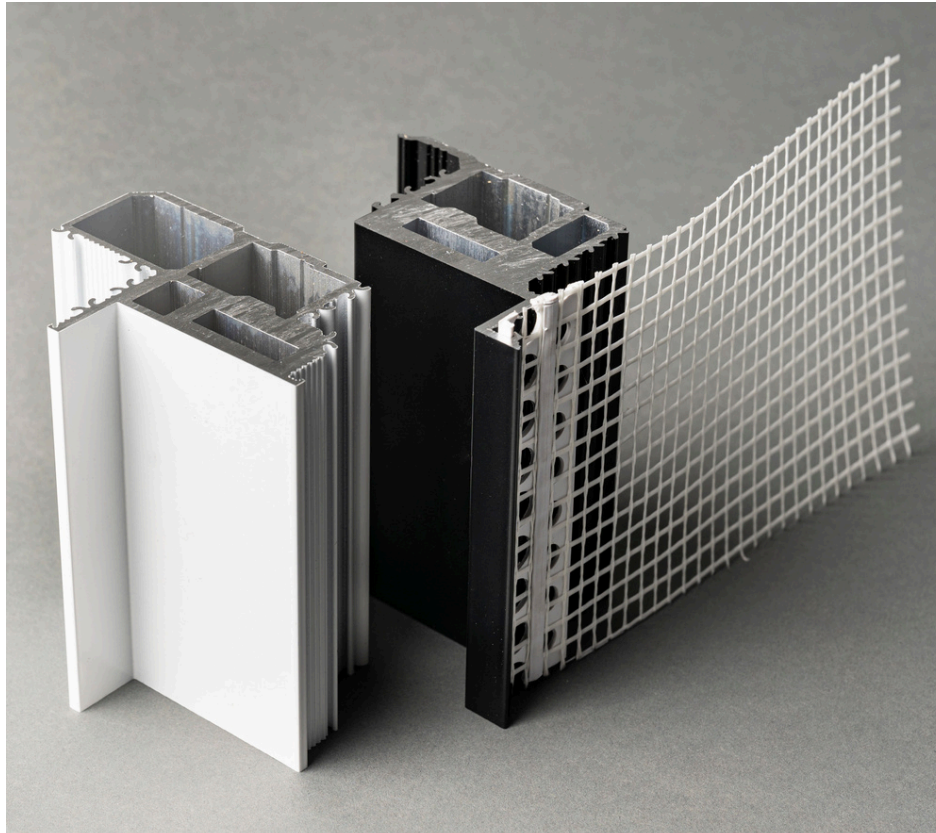


Flush view
pivot point
left side = DIN R



Flush view
pivot point
right side = DIN L

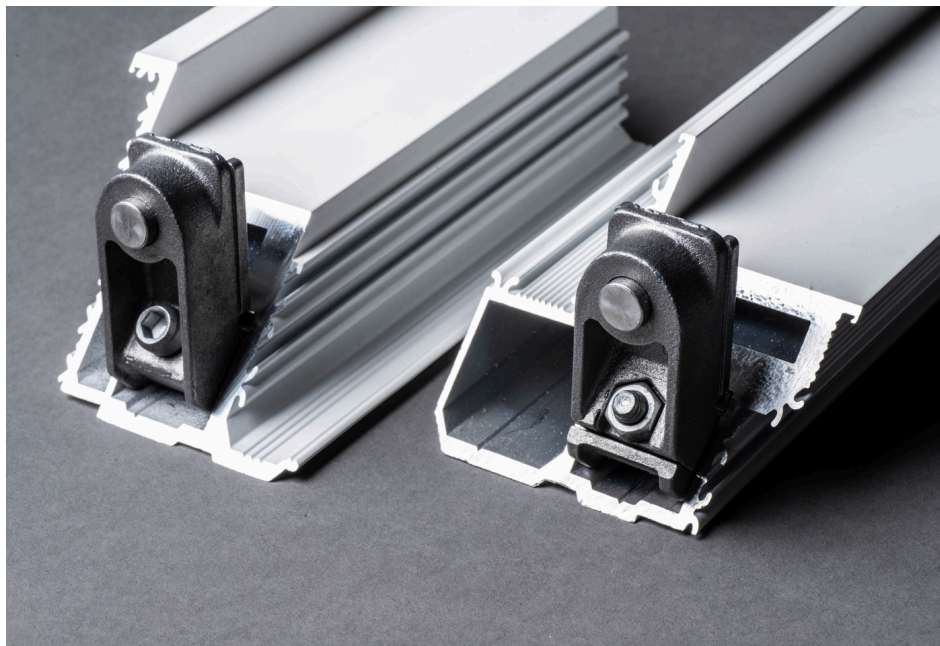
When closed, the appearance of both variants is identical. This is illustrated on page 53.



simi-lar **Aluminum frames**

Our aluminum frames are available in push and pull versions. The surfaces of the frames are powder-coated and are available in the standard colors white RAL 9016 matt or black RAL 9005 matt.

The available plaster and reinforcement fabric covers the joint between the frame and the wall and prevents cracking.



simi-lar Compounds

The corner connectors are inserted into the groove of the frame profile, thereby ensuring a precise 90-degree connection between the upright frame part and the crosspiece.

The design hinges and the striking plate, as well as any other attachments, are securely fastened to the frame using metric threaded screws.



simi-lar

Flächenbündige Bauelemente
www.simi-lar.de

simi-lar 54
Door custom-made production

Door elements



simi-lar 54

Door custom-made production

The classic flush door element consists of a three-sided aluminum frame connected to a 54 mm/ 2.2 inch thick wooden door leaf. The door leaf is attached with two to four 3D hinges, depending on the height.

The sealing groove is located in the door leaf, thereby ensuring a maximally stable frame geometry.

The minimalist design of the wallpaper door is rounded off by a magnetic latch lock. In addition, the adjustable striking plate offers further setting options.

simi-lar 54

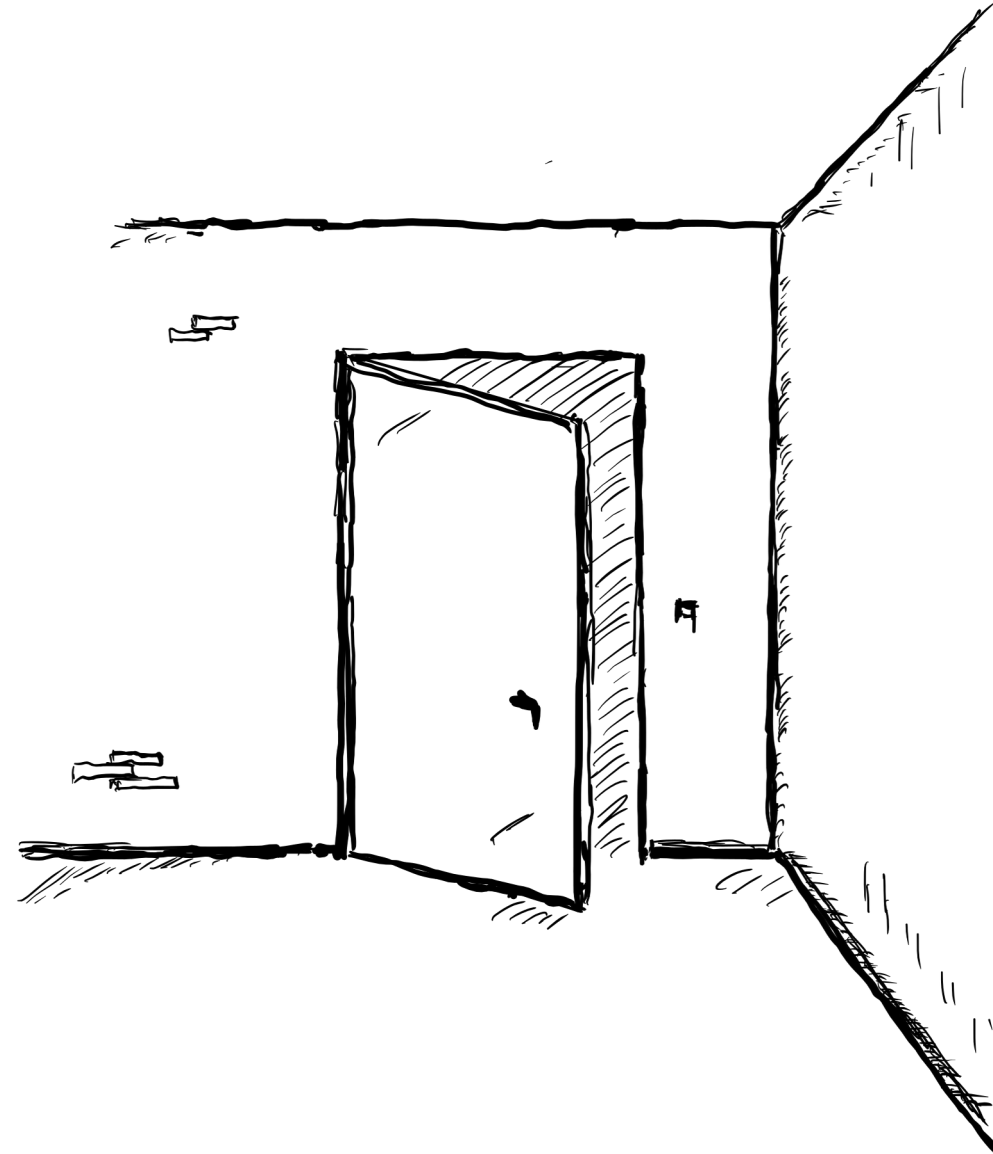
Door custom-made production

Historical background

Flush doors, also known as “wallpaper doors”, are designed to expand rooms visually and create a seamless design. They were often used in historical buildings to hide access to certain areas or to avoid disrupting the aesthetics of a room. These doors are often integrated into walls and covered with wallpaper or other wall coverings so that they are barely noticed.

Modern utilization

In modern interior design flush doors are also very popular, as they offer a creative way to design rooms while ensuring functionality.





simi-lar 54

Floor to ceiling hight

Floor-to-ceiling doors impress with a modern, clean look and maximize the feeling of openness. They create a spacious and elegant ambience.

Our floor-to-ceiling doors are characterized by seamless integration into the wall surfaces and fit perfectly into modern room concepts. With a wide range of customization options in terms of material and color, we offer the ideal solution for architectural visions.

simi-lar 54

Door custom-made production

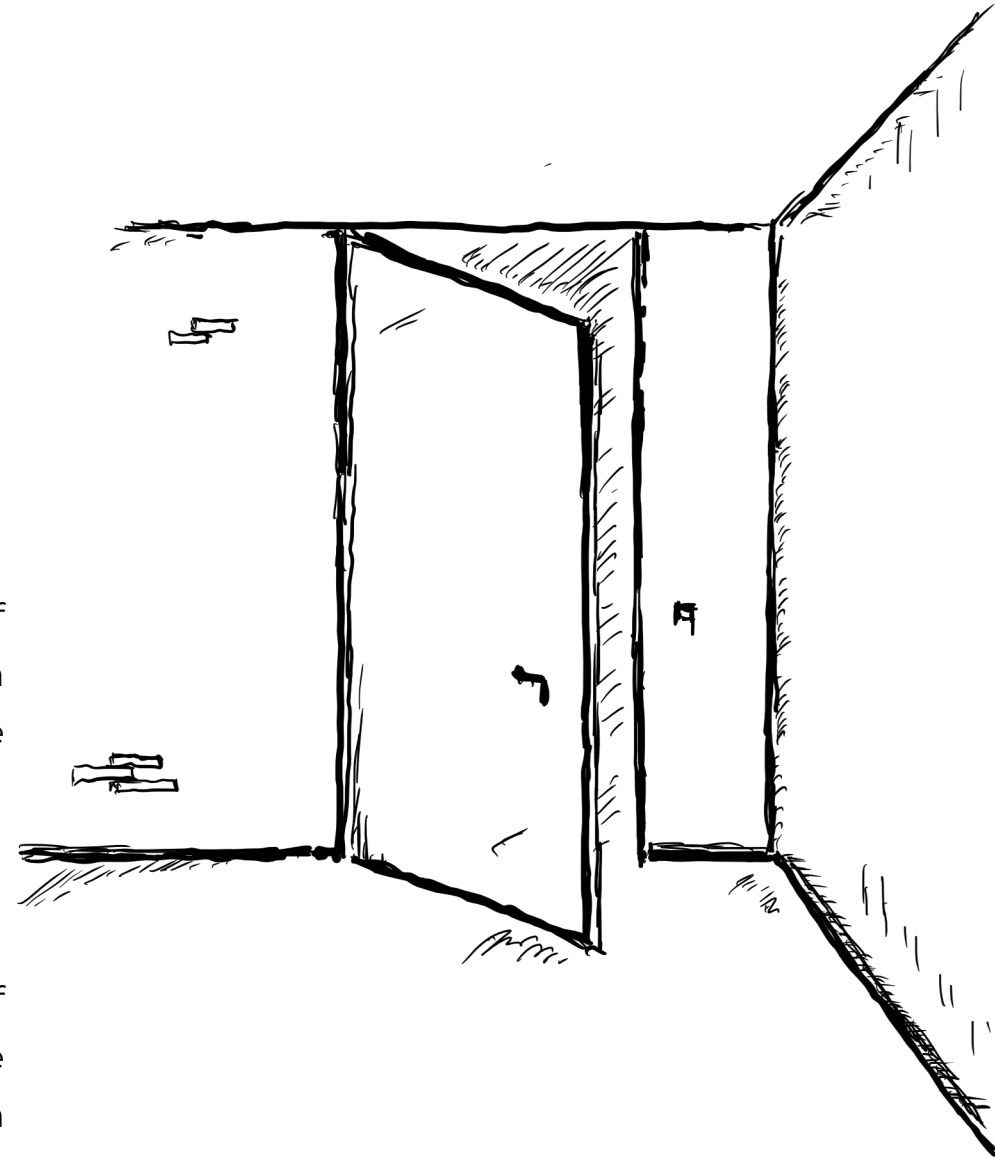
Floor to ceiling high

Historical background

Floor-to-ceiling doors originated in the architecture of magnificent european palaces and villas of the 18th century. They were used to emphasize the height of the room and to intensify the impression of size and elegance.

Modern utilization

Nowadays, floor-to-ceiling doors are an integral part of minimalist living concepts. They create space and make rooms appear more open and brighter, which makes them particularly popular in modern designs.





simi-lar 54

Double wing

Double wing doors create generous passageways, in addition to an open, inviting ambience. They are particularly suitable for representative rooms and offer flexibility in interior design.

Our double wing doors combine functionality and design. Due to their stable construction and wide range of custom-made options in terms of materials and finishes, they fit perfectly into modern living and working spaces.

simi-lar 54

Door custom-made production

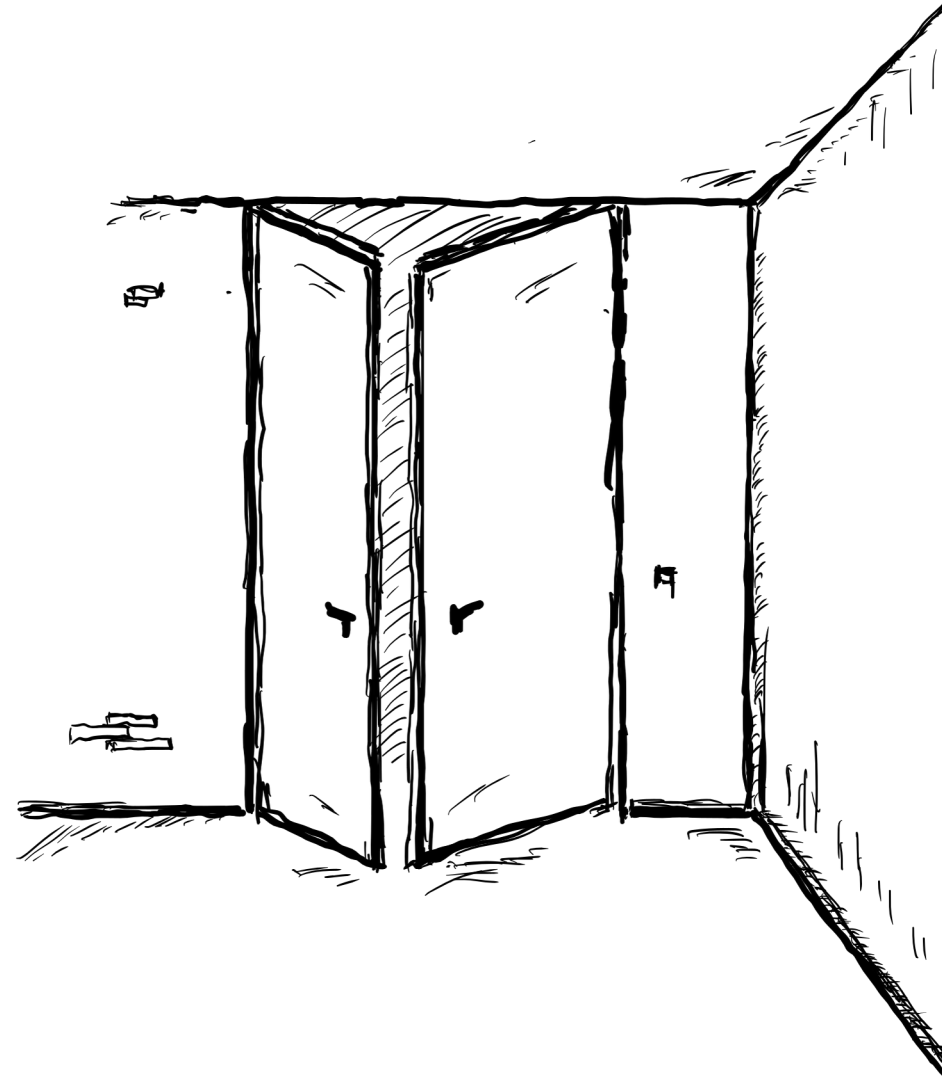
Double wing doors

Historical background

Double wing doors have their origin in magnificent manor houses and palaces, where they were used to create impressive entrances.

Modern utilization

Today, double wing doors are used in both modern and classical architectural styles, providing generous passageways for spacious room concepts.





simi-lar 54 **Top panel**

Doors with top panels are a stylish way to visually lengthen doors and make the room appear higher. They create an elegant finish and blend harmoniously into the wall surfaces.

Our top-panel doors offer a customized solution for optically extending door surfaces. A top panel element can be used to create floor-to-ceiling openings where two different ceiling heights make a floor-to-ceiling design impossible.

simi-lar 54

Door custom-made production

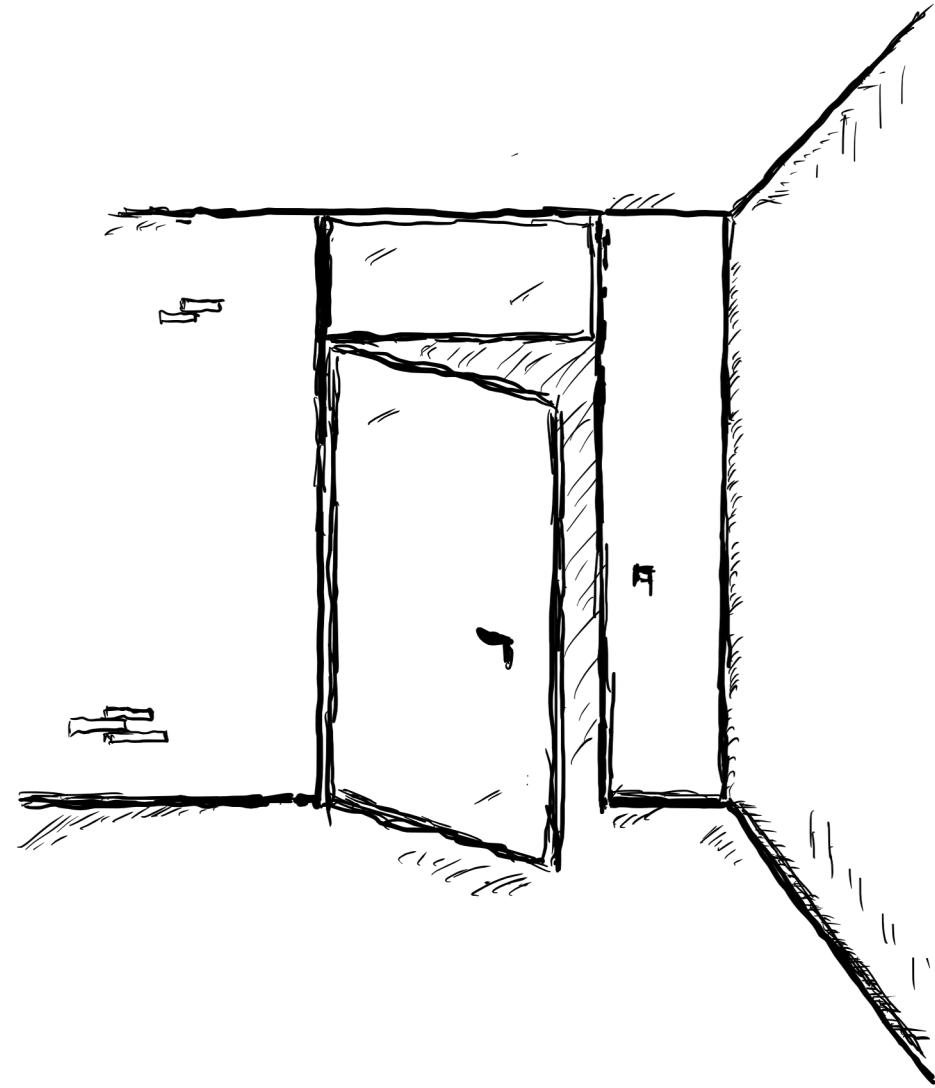
Top panel

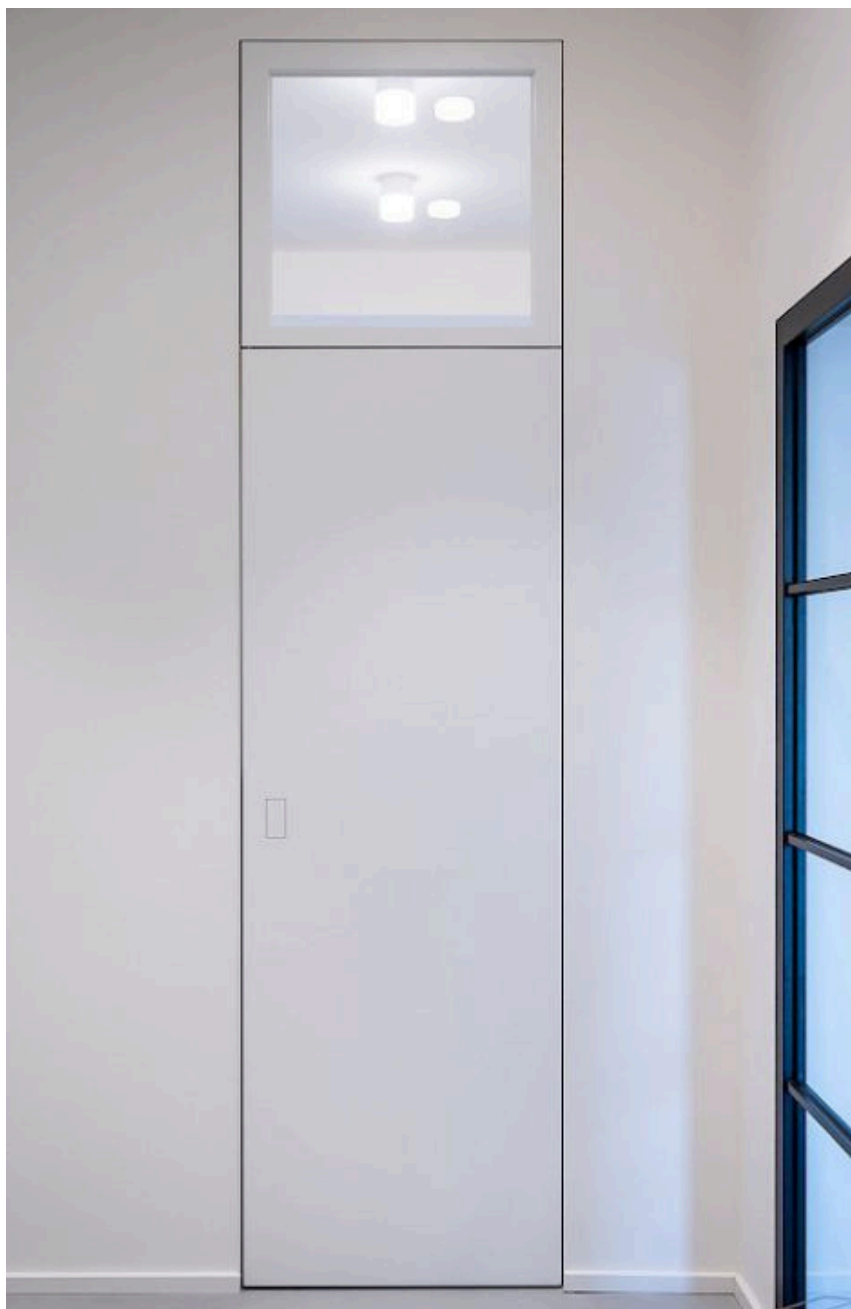
Historical background

Top panels were used in historic buildings to emphasize architectural finishes and visually enlarge the room. Typically they were found in buildings with high ceilings.

Modern utilization

Today, modern designs of top panels are used to make doors and rooms appear larger or to create a floor-to-ceiling look with doors between rooms with different ceiling heights. They give rooms a clear and elegant structure.





simi-lar 54 Fanlight

Doors with fanlights allow natural light into the room without disturbing privacy. They are particularly suitable for rooms where light transmission is desired, but the door should remain closed.

Our fanlight doors provide a practical solution for rooms flooded with light, in addition to a stylish touch.

simi-lar 54

Door custom-made production

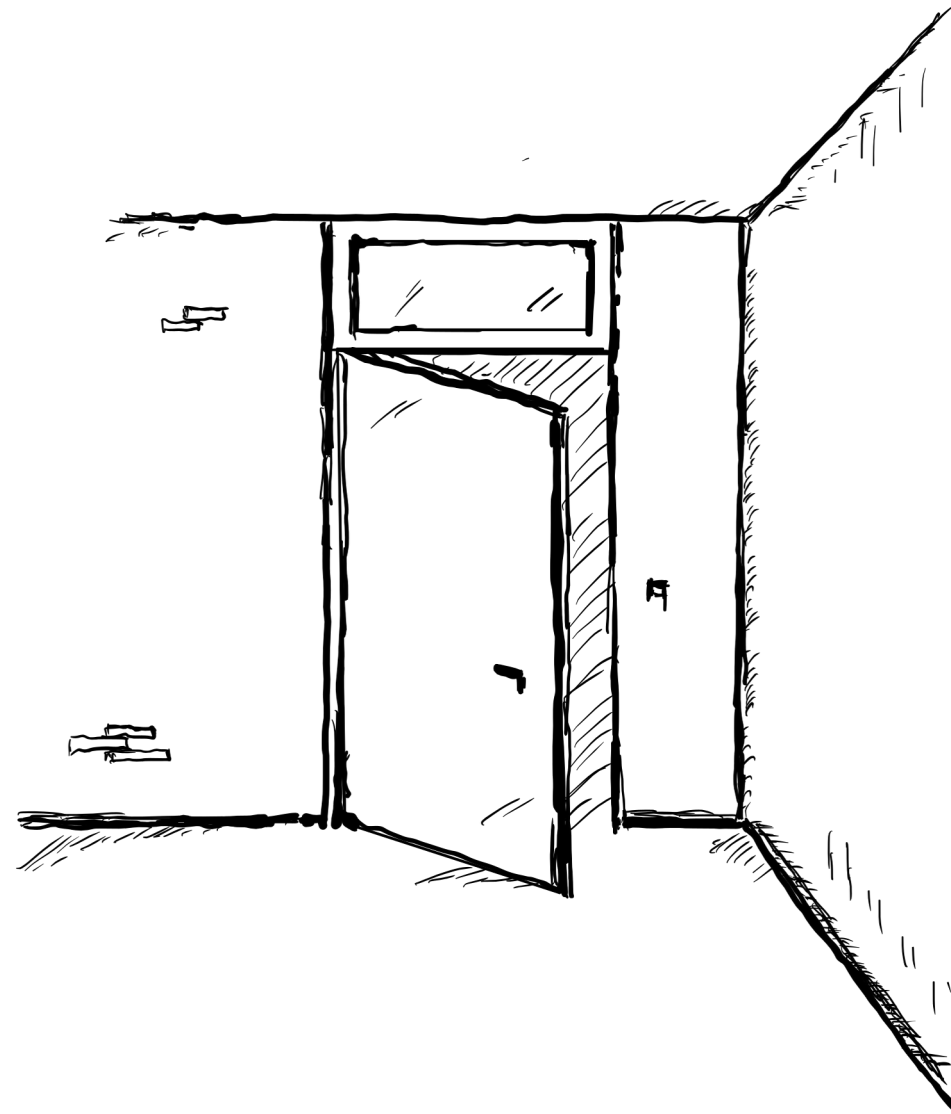
Fanlight

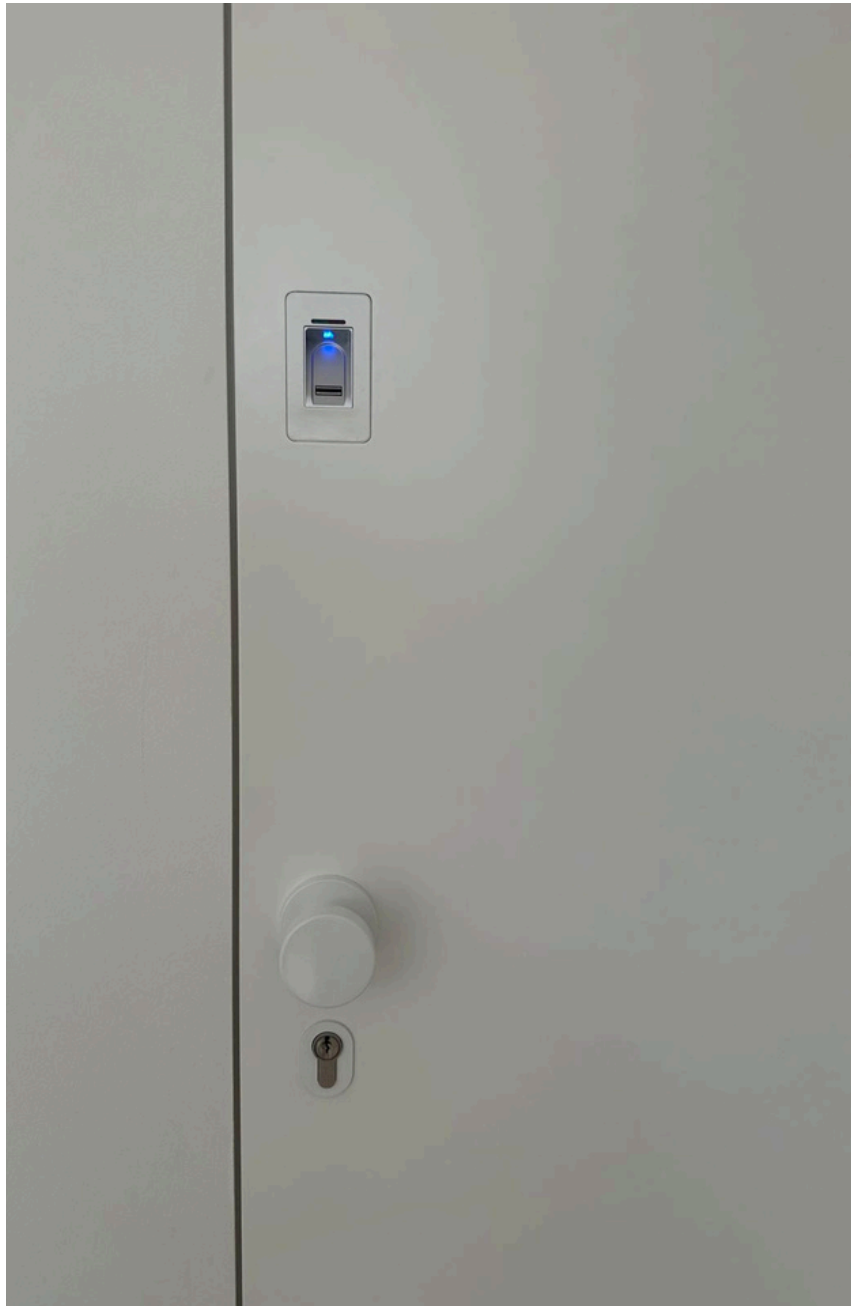
Historical background

Fanlights were already used in ancient Rome to bring light into closed rooms. In representative buildings, they were often installed above doors and windows.

Modern utilization

Nowadays, fanlights are often used in modern room concepts to create additional light sources and the room appears brighter and more open.





simi-lar 54 features

The door system allows a range of special features:

Handle hole

Locking hole as required

Full-length box section superstructure

Integrated door closer

Integrated opening limiter

Electric strike

Bolt contact

Multi-Point-Locking

Fingerprint

Opening contact

Magnetic holding

Finger Pull Handle

Skirting frame

Retractable floor seal (normal, delayed, overflow)

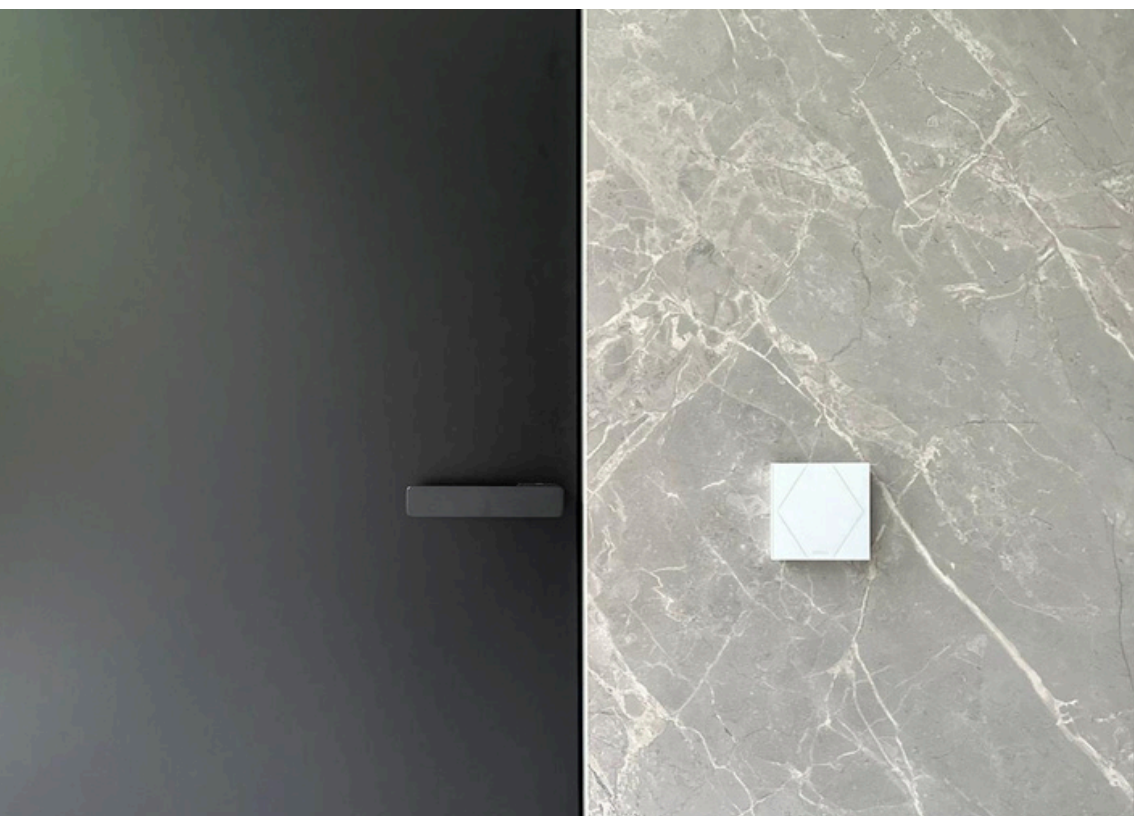
Alignment fitting

simi-lar

Plaster and reinforcing mesh

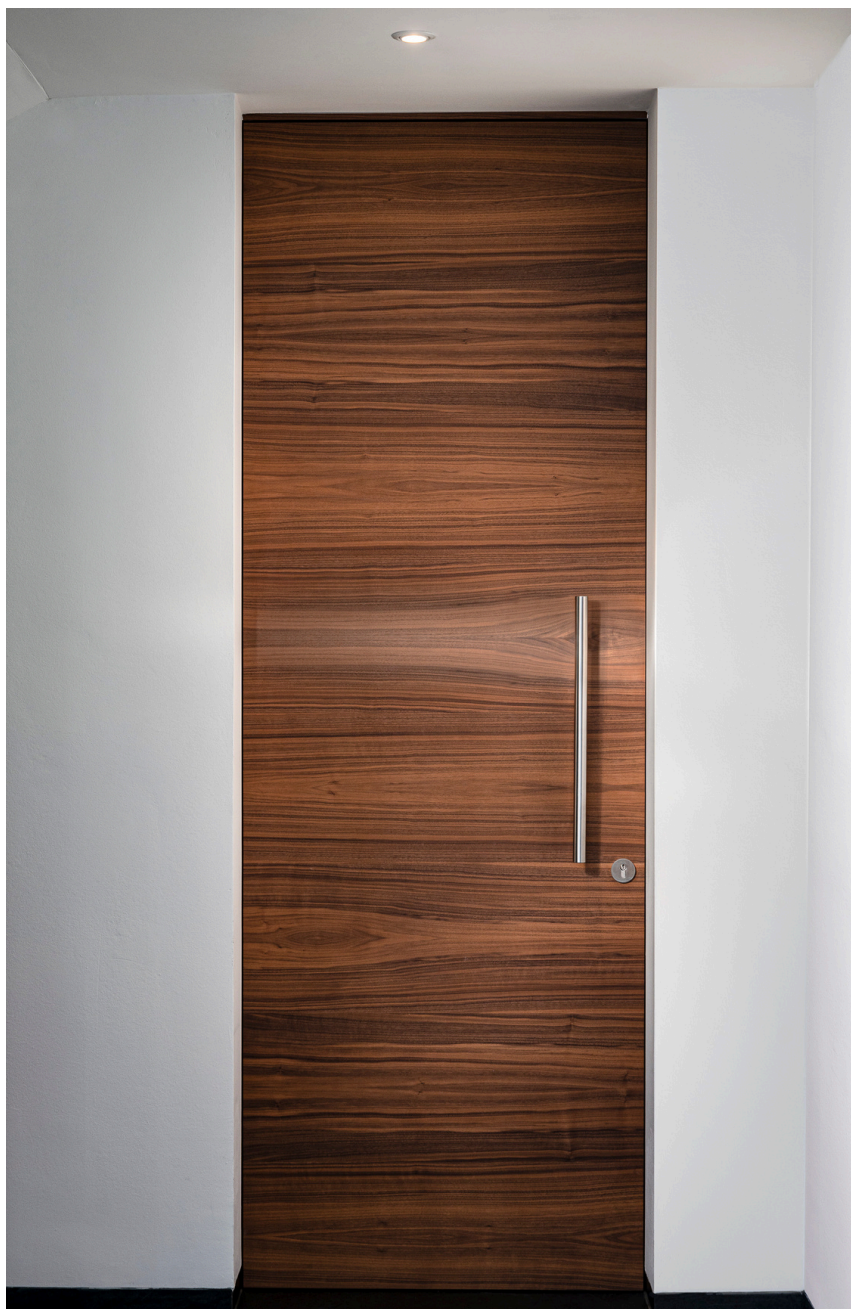
A plaster mesh can be clicked firmly into the simi-lar frame. This creates a transition between the frame and the masonry. The stable frame cross-section, the multiple frame screw connections and the use of frame foam prevent cracks from forming.





simi-lar 54
Door custom-made production

Surface diversity



simi-lar 54

Real wood veneer

Real wood veneers upgrade every room with the natural beauty of wood. They give rooms warmth and elegance and combine traditional materials with modern design.

Our real wood doors offer the perfect combination of naturalness and contemporary style. With a variety of wood types and finishes, they set individual accents and create a distinctive atmosphere in every room.

simi-lar 54

Door custom-made production

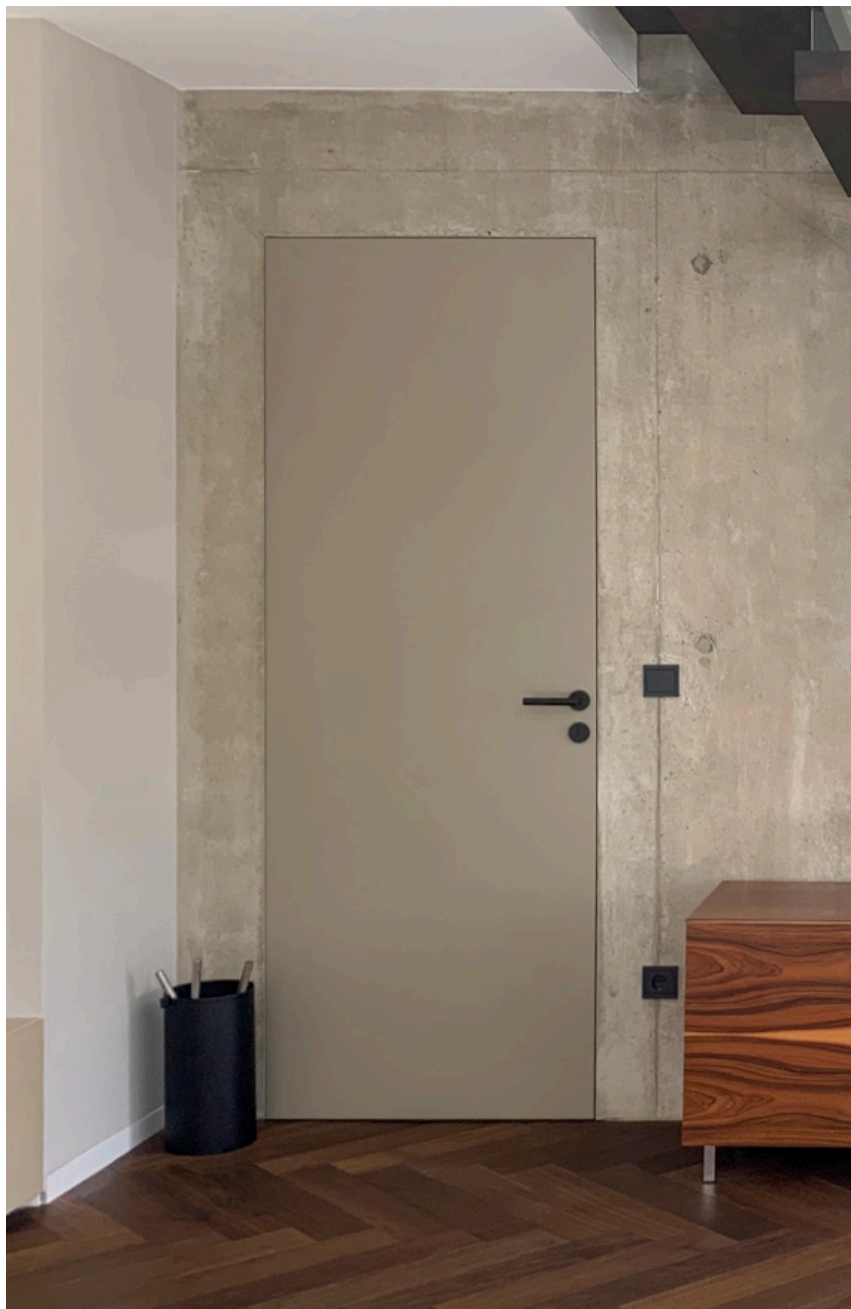
Real wood veneer

Historical background

Real wood veneers were developed in the 17th century to create the look of solid wood in a more cost-efficient way. They create real wood surfaces while conserving natural resources.

Modern utilization

In modern architecture, real wood veneers offer a natural and sustainable solution. They combine the aesthetics of solid wood with the lightness of modern door systems.



simi-lar 54 Lacquered

Lacquered doors are available in a wide range of colors and perfectly match individual room concepts. They ensure harmonious color transitions and emphasize modern, stylish interiors.

Our lacquered doors impress with a high-quality finish that is not only visually appealing, but also particularly long-lasting and easy to care for. With a wide variety of colors from RAL/NCS as well as Farrow & Ball palettes, we offer the right solution for every architectural vision.

simi-lar 54

Door custom-made production

Lacquered

Historical background

The RAL color scale was developed in Germany in 1927 to enable consistent and precise coloring in architecture. NCS was added in the 1970s and offered even more possibilities for individual color designs.

Modern utilization

Today, lacquered doors are available in a wide range of colors that perfectly match modern, design-oriented architecture.



simi-lar 54

Primed for on-site finish

Primed doors are the ideal basis for creative surface treatments directly on site. They allow maximum flexibility in design and can be optimally adapted to individual requirements.

Our primed doors are prepared so that they can be perfectly finished on site. This flexibility makes them the optimal solution for projects where the final surface is customized.

simi-lar 54

Door custom-made production

Primed for on-site finish

Historical background

In the 19th century, the idea was born of delivering doors primed so that builders on site could do the finishing.

Modern utilization

Today, primed doors offer maximum flexibility in design and allow individual adjustments directly on the construction site.



simi-lar 54

Laminate surface

Doors with a laminate surface offer a modern and long-lasting solution for rooms with high traffic. They are scratch-resistant, easy to clean and available in numerous designs.

Our laminate doors combine robustness with a contemporary look. They are the perfect choice for areas where functionality and style are both desired.

simi-lar 54

Door custom-made production

Laminate surface

Historical background

Laminate material was developed in the early 20th century to provide a robust, low-cost alternative to solid wood. Quickly it was used in public buildings where durability was required.

Modern utilization

Today, laminate doors are ideal for areas with high traffic and provide a durable, scratch-resistant surface.



simi-lar 54

Reclaimed wood

Doors made of reclaimed wood give a feeling of a rustic charm and tell the story of the material used. They combine sustainability with unique design and add a special character to the room.

Our reclaimed wood doors combine the beauty of reused wood with modern functionality. Each door element is unique and blends perfectly into sustainable and stylish room concepts.

8 mm thick reclaimed wood lamellas are used to give the surface the necessary depth and rustic character.

simi-lar 54

Door custom-made production

Reclaimed wood

Historical background

The reuse of old wood originated in rural areas, where wood from old buildings was recycled. This practice was particularly common in Alpine regions centuries ago.

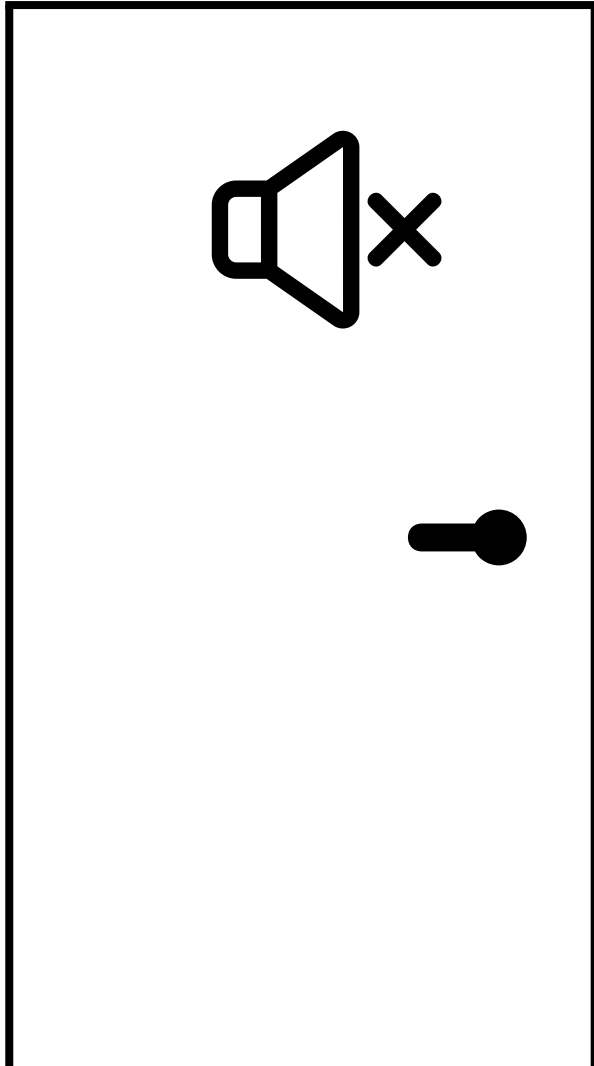
Modern utilization

Today, doors made of reclaimed wood stand for sustainable design and bring a rustic and elegant charm to modern interiors.



simi-lar 54
Door custom-made production

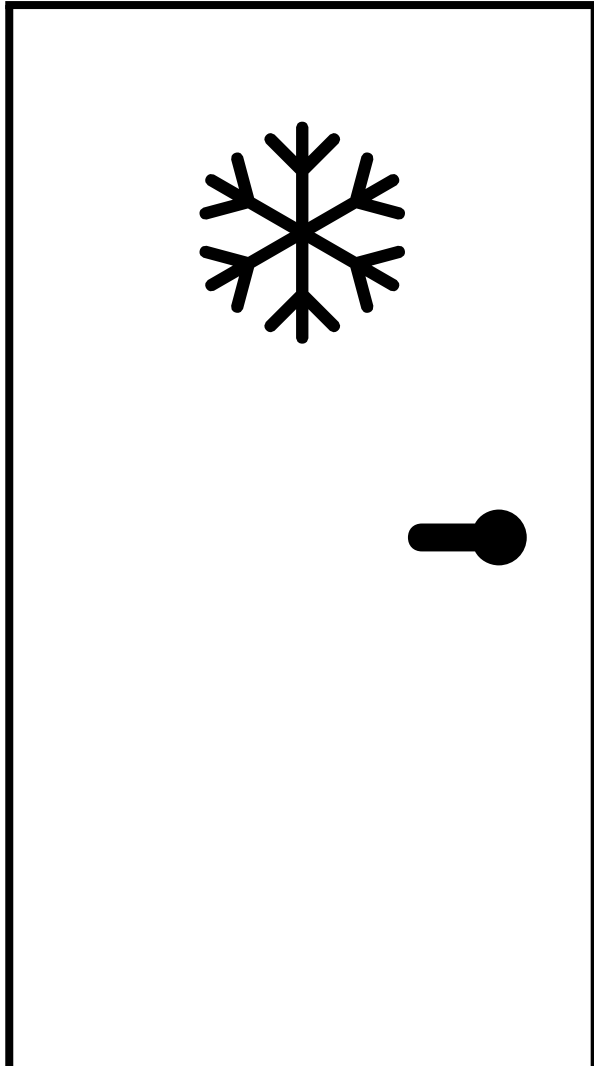
Function classes



simi-lar 54 Soundproof

Soundproof doors provide an effective barrier against noise, ensuring a quietness and undisturbed environment. They are particularly suitable for areas where quietness and concentration are required, such as offices or living spaces.

Our soundproof doors up to class 3 provide the perfect solution for rooms where noise pollution needs to be minimized.

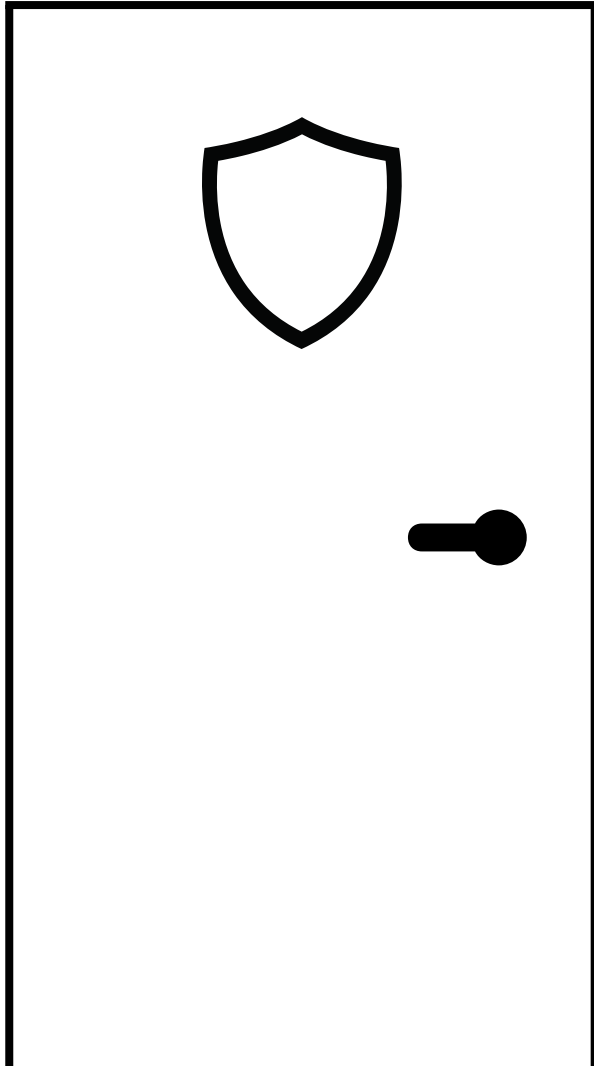


simi-lar 54

Climate stability III

Climate-stable door elements guarantee stability even when subjected to major temperature and humidity fluctuations. They are ideal for rooms with extreme climatic conditions, such as living space that extends the basement or garage.

Our doors with climate stability up to class III offer long-term reliability and remain dimensionally stable even under extreme conditions. They are the ideal choice for demanding environments.

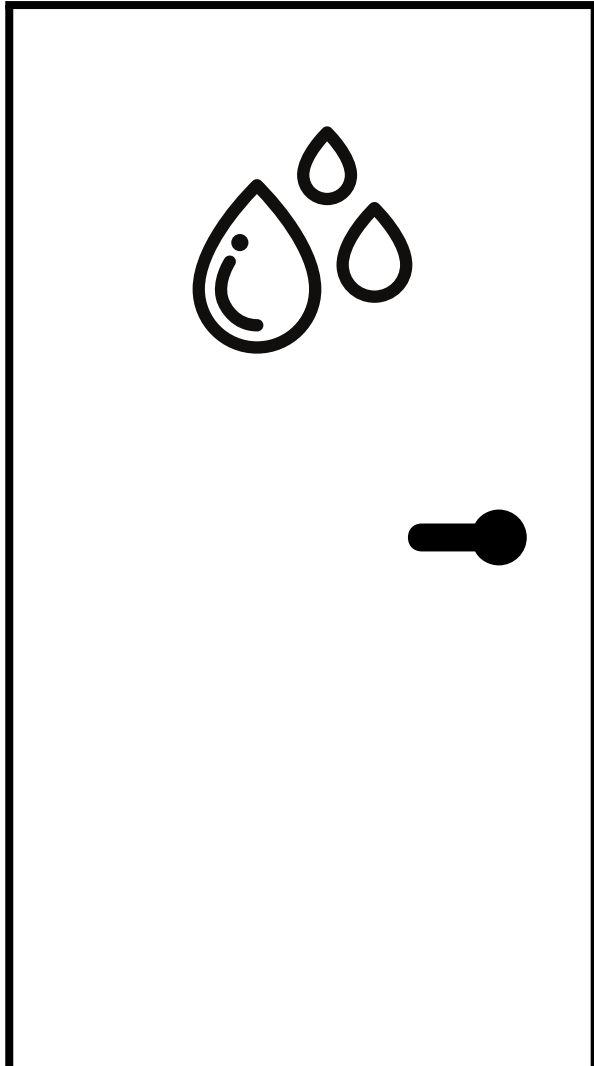


simi-lar 54

Burglary protection

Burglar-resistant doors provide additional protection against forced entry. They are ideal for residential and commercial spaces where a high level of security is required.

Our RC2 burglar-resistant doors combine robust security technology with aesthetic design.

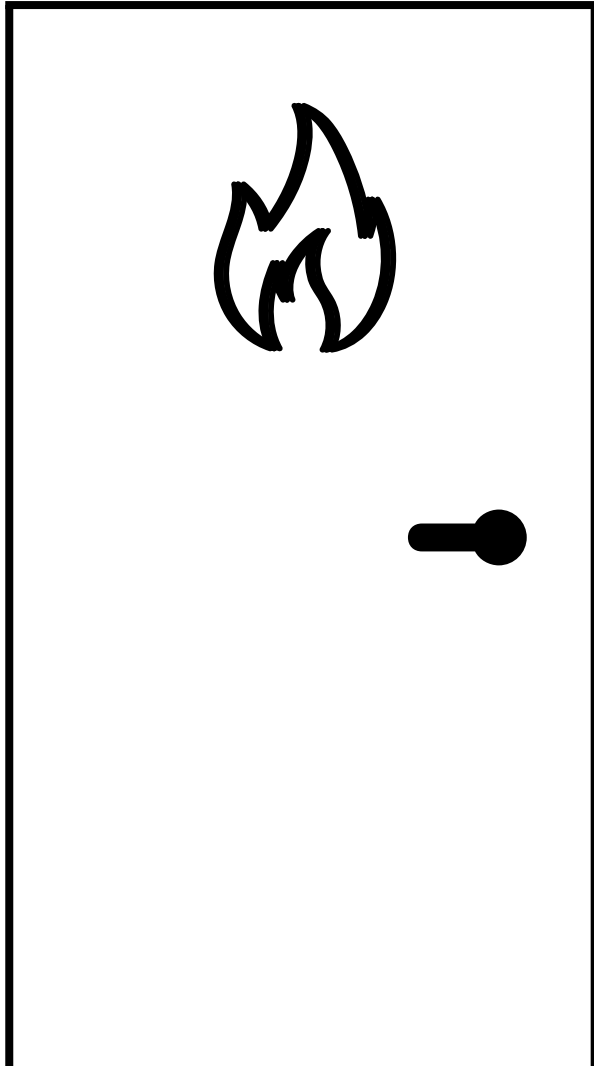


simi-lar 54

Doors for damp and wet rooms

Doors for damp and wet rooms are specially designed for rooms that are exposed to high humidity, such as bathrooms or swimming pools. They prevent moisture from damaging the door.

Our doors for damp and wet rooms are DIN 16580-tested, making them the perfect choice for wet areas.



simi-lar 54

Fire protection

Fire doors certified according to DIN 18095 combine fire protection with modern design and ensure functionality in your home, as a garage connecting door or office door.

Our T30-RS fire doors primarily provide protection against fire hazards. Their elegant, seamless surface, which fits perfectly into any interior design, combines protection with design.



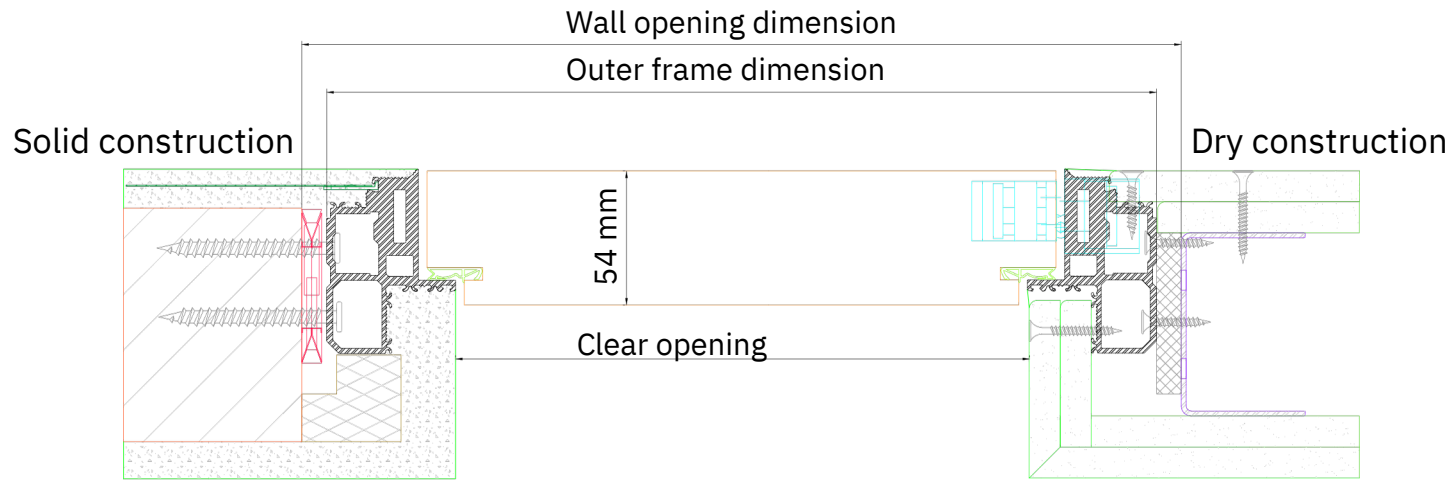
simi-lar 54
Door custom-made production

Technical drawings

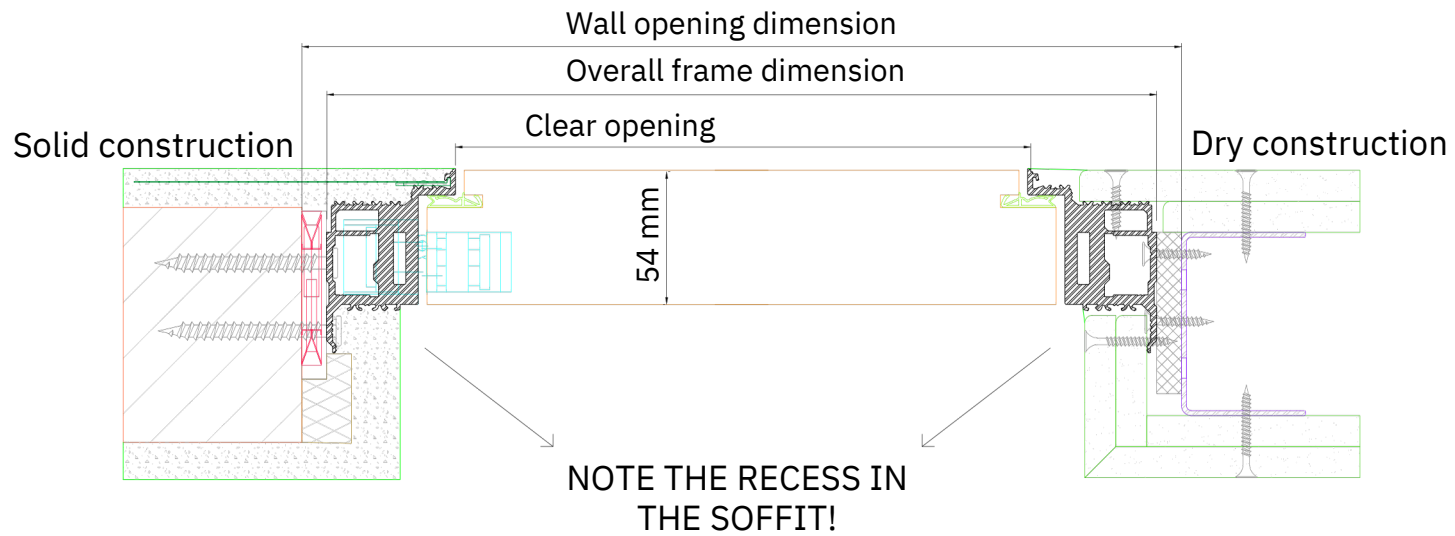
simi-lar 54 / Dimensions

Dimensioning	Width in mm	Height in mm
Wall opening dimension	ZAM width + 20 mm	ZAM height + 10 mm
Outer frame dimension (ZAM)	ZAM width	ZAM height
Clear opening	ZAM width - 104 mm	ZAM height - 52 mm

simi-lar 54 / Horizontal cut



Variant **pull**



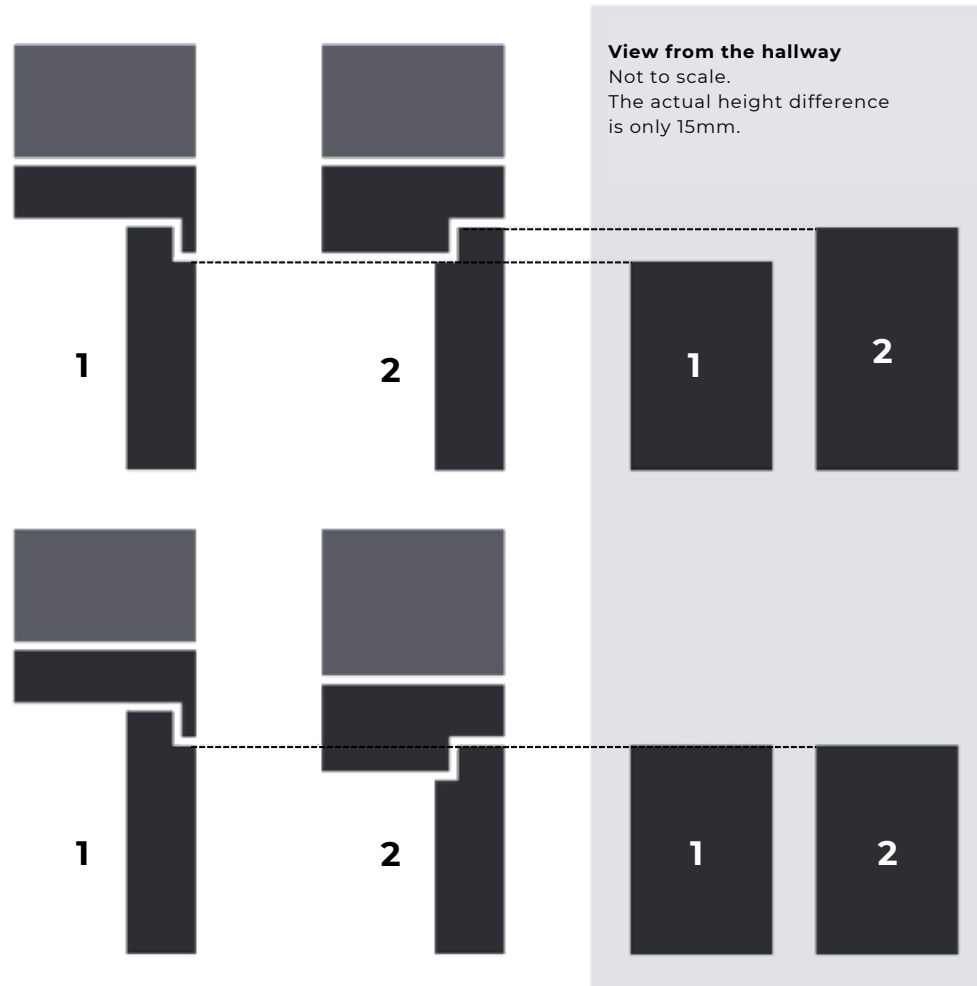
Variant **push**

Optional height compensation

There are two door elements next to each other: one with the push opening variant and one with the pull opening variant. To make both door elements appear to be the same height, the door element with the pull opening variant must be adjusted. The adjustment of the pull element must be adapted by the rebate depth (15 mm) of the push variant.

Without leveling compound

Doors of the same height appear to be at different heights.



With leveling compound

Doors of different heights appear to be the same height.

Product information

Frame and door leaf available separately

Aluminum profile frame, push/pull, white matt RAL 9016 or black matt RAL 9005 powder-coated, special colors available

Suitable for solid and drywalls

Door leaf thickness 54 mm / 2.2 inch Surface finish according to RAL/ NCS, laminate, veneer

Included in the accessory package: magnetic lock in BB, WC or PZ, concealed hinge system / 3-dimensionally adjustable, velour nickel-plated

Assembly aids for maintaining the frame rebate dimensions

Stainless steel strike plate - adjustable, built-in

White rubber seal installed

Customized production in width x height up to 3500 mm/ 137.8 inch

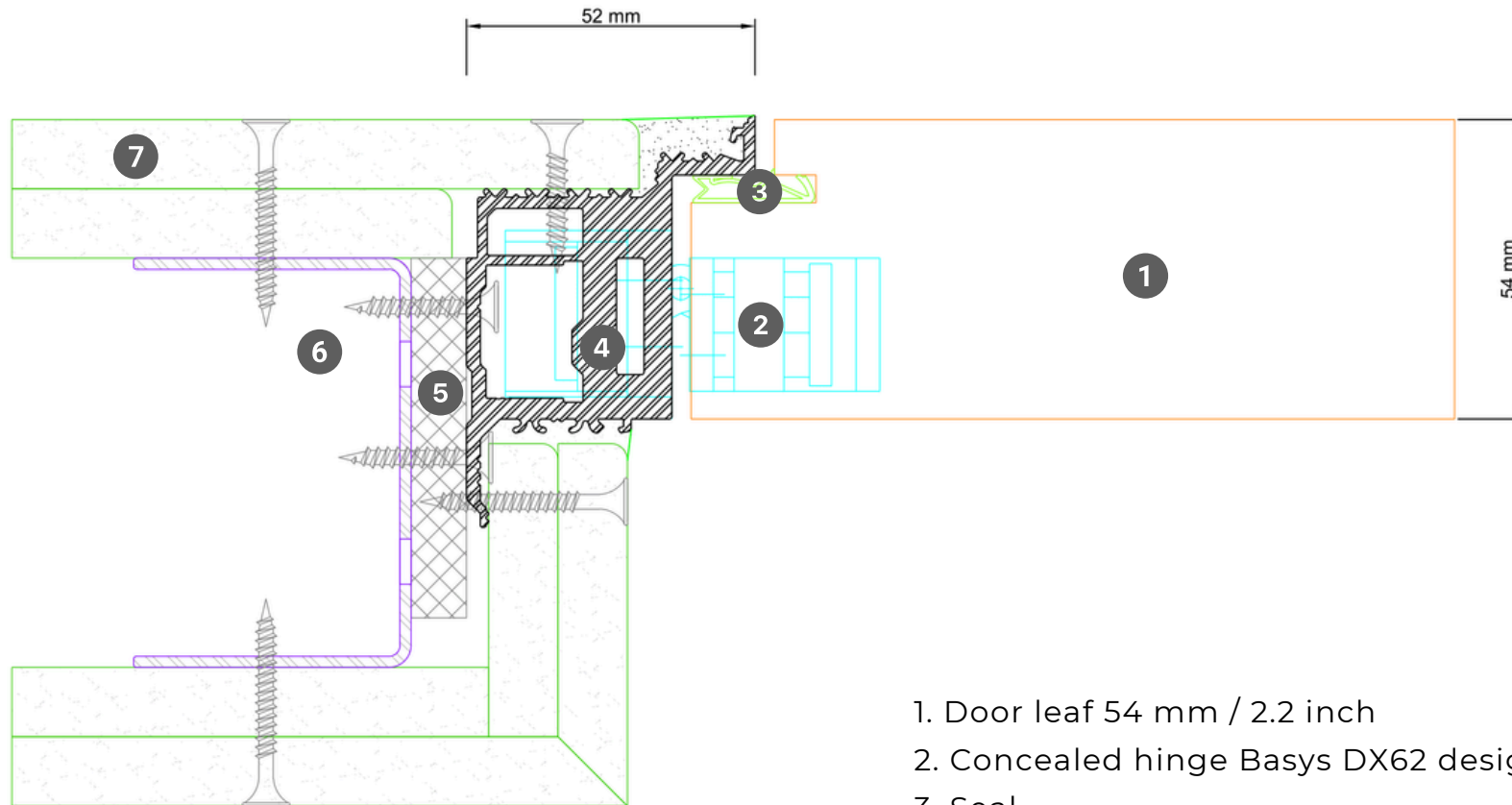
Functions: Fire and smoke protection, sound insulation, burglary protection, climate stability, wet and moisture stability

Special elements: top panel, fanlight, door closer

Optional accessories: plaster nets for solid walls, rubber seals, hinges and locks in black

simi-lar 54

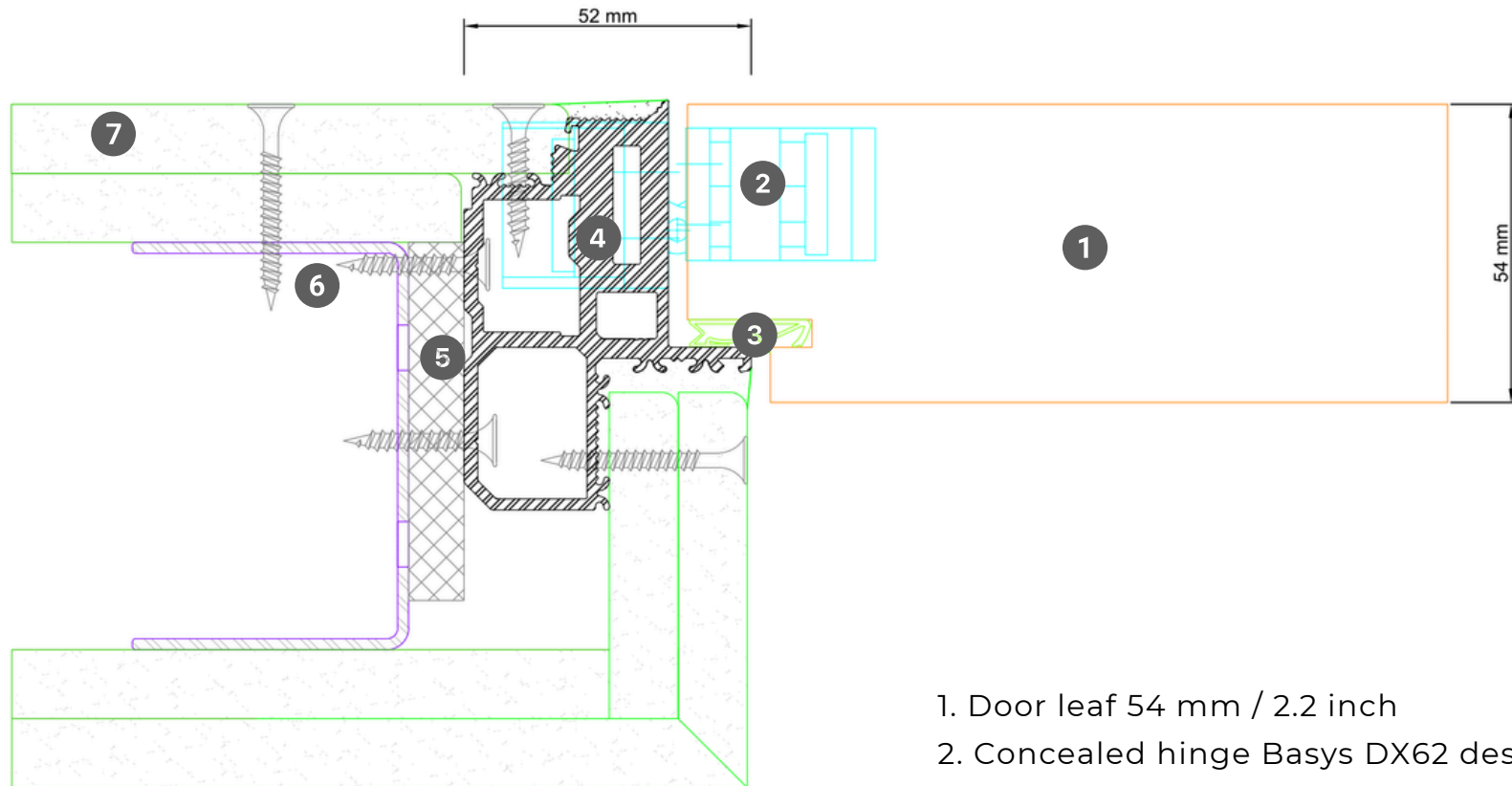
Profile variant push in drywall construction



1. Door leaf 54 mm / 2.2 inch
2. Concealed hinge Basys DX62 design
3. Seal
4. simi-lar 54 frame push
5. Installation spacer
6. Reinforced drywall profile
7. Plasterboard 12.5 mm/ 0.49 inch

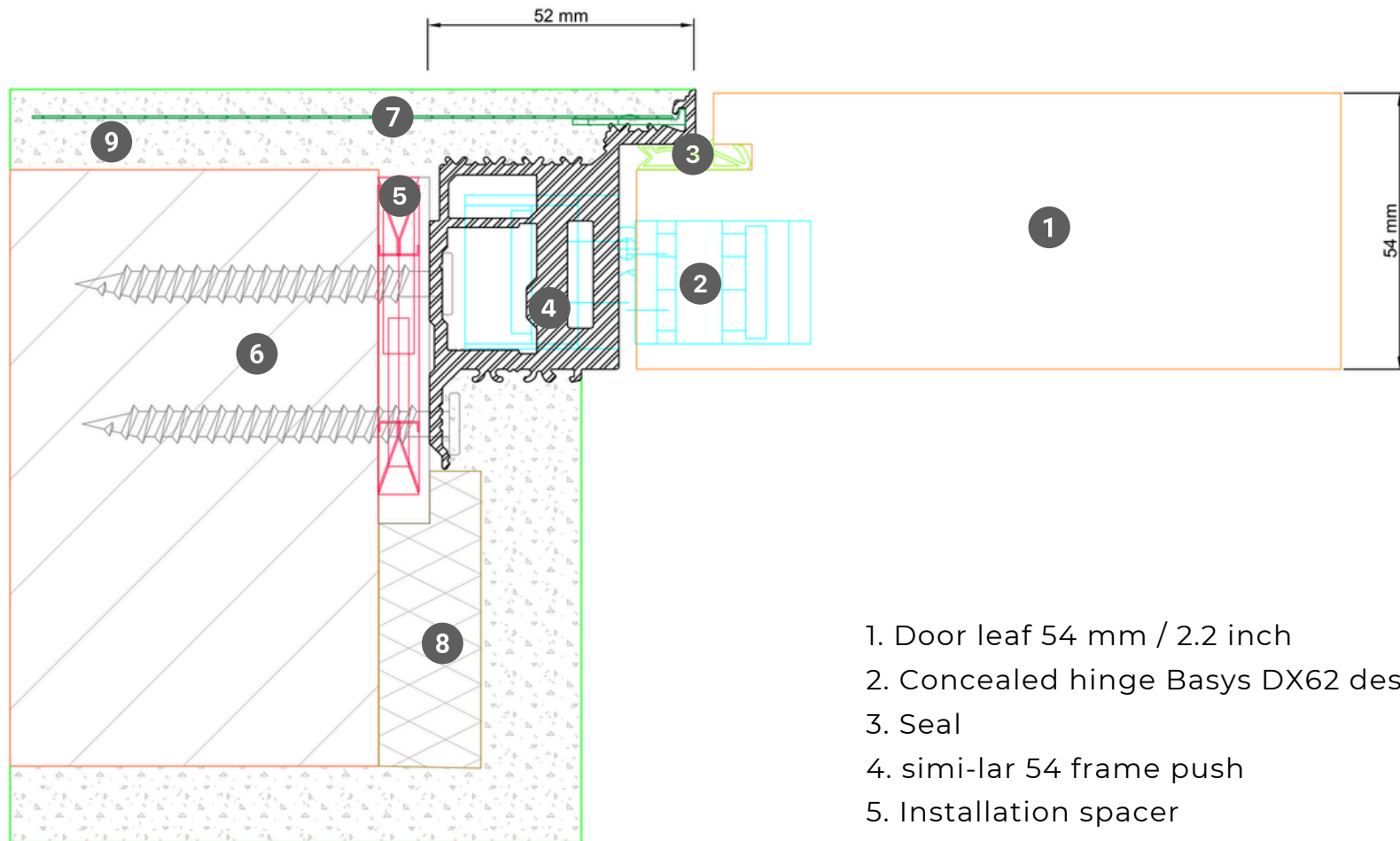
simi-lar 54

Profile variant pull in drywall construction



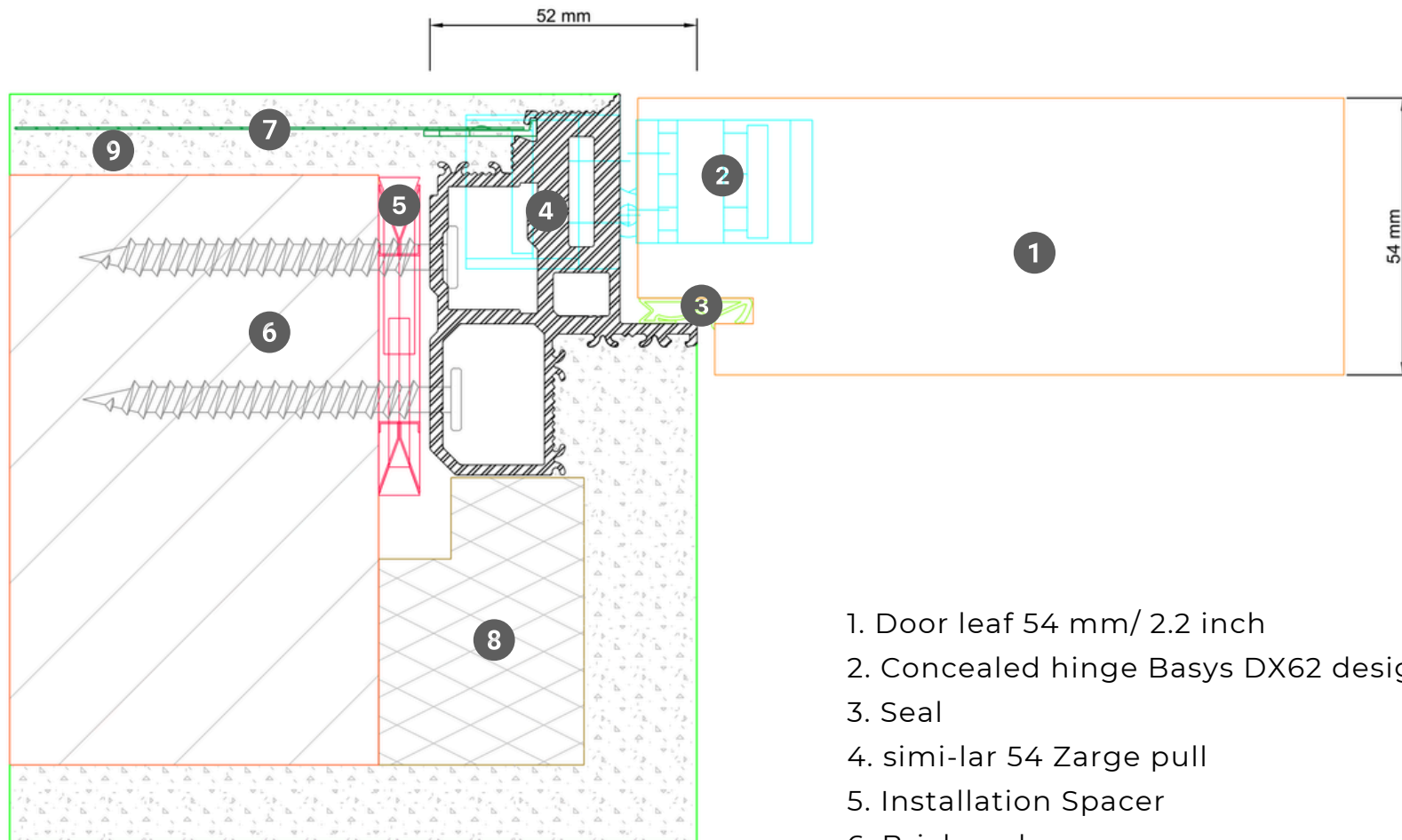
1. Door leaf 54 mm / 2.2 inch
2. Concealed hinge Basys DX62 design
3. Seal
4. simi-lar 54 frame pull
5. Installation spacer
6. Reinforced drywall profile
7. Plasterboard 12.5 mm/ 0.49 inch

simi-lar 54 Profile variant push in solid construction



1. Door leaf 54 mm / 2.2 inch
2. Concealed hinge Basys DX62 design
3. Seal
4. simi-lar 54 frame push
5. Installation spacer
6. Brickwork
7. Click-in plaster and reinforcement mesh
8. Plaster base plate
9. Plaster 15 mm / 0.59 inch

simi-lar 54 Profile variant pull in solid construction



1. Door leaf 54 mm/ 2.2 inch
2. Concealed hinge Basyx DX62 design
3. Seal
4. simi-lar 54 Zarge pull
5. Installation Spacer
6. Brickwork
7. Click-in plaster and reinforcement mesh
8. Plaster base plate
9. Plaster 15 mm / 0.59 inch



simi-lar 44

Door system

Standardized element



simi-lar 44

Sizes according to standard dimension

Doors in the simi-lar 44 system offer flush integration for a minimalistic, modern design. The transition between the door and the wall is seamless, creating a clean and calm aesthetic.

Our standard doors are characterized by their high-quality workmanship and functionality. They are perfectly matched, both visually and technically, to common building dimensions according to german DIN 18100.

simi-lar 44

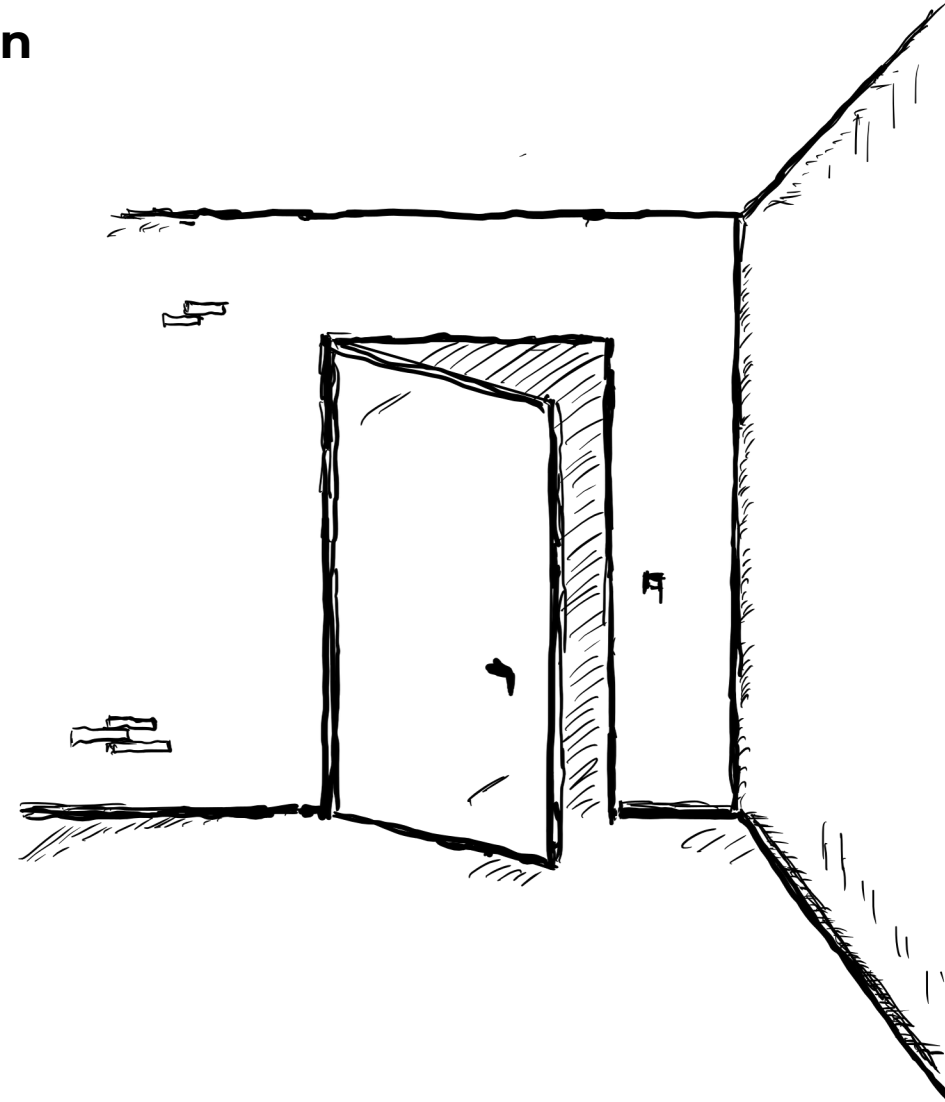
Sizes according to standard dimension

Historical background

Flush doors, also known as “wallpaper doors”, are designed to expand rooms visually and create a seamless design. They were often used in historic buildings to hide access to certain areas or to avoid disrupting the aesthetics of a room. These doors are often integrated into walls and covered with wallpaper or other wall coverings so that they are barely noticed.

Modern utilization

In modern interior design flush doors are also very popular, as they offer a creative way to design rooms while ensuring functionality.



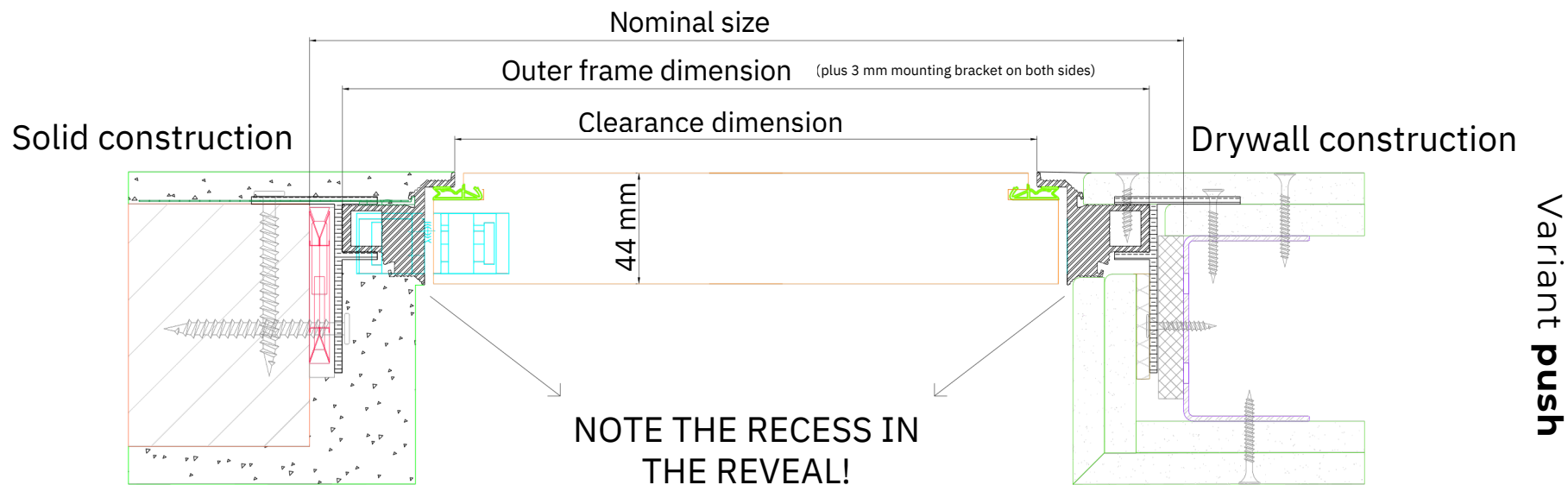
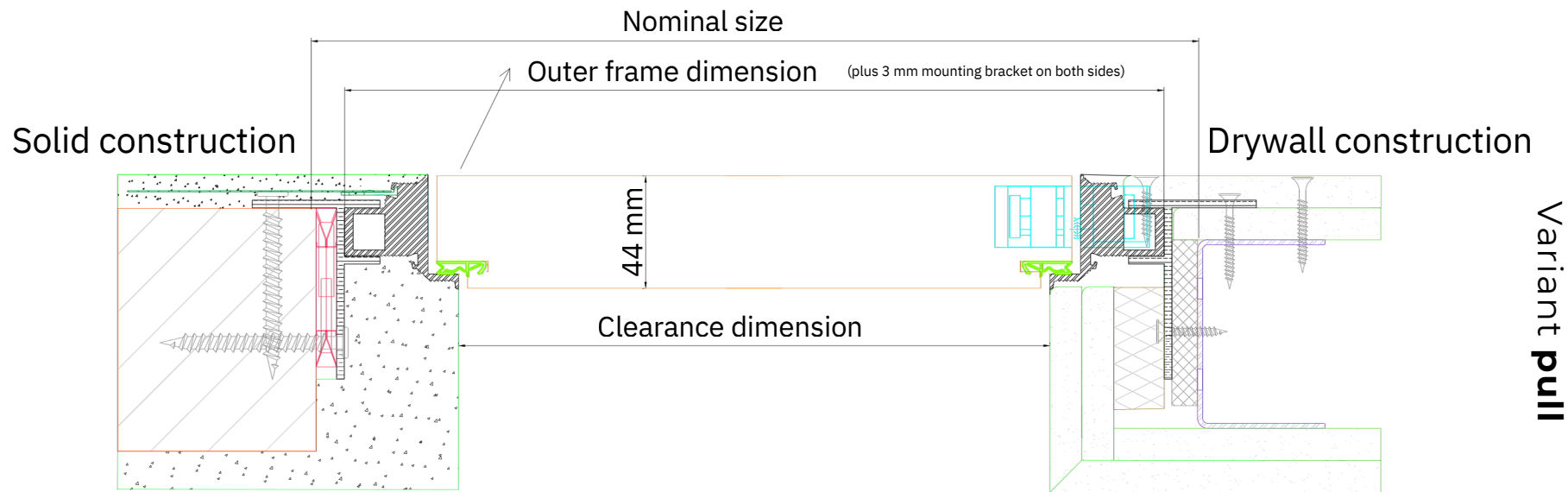


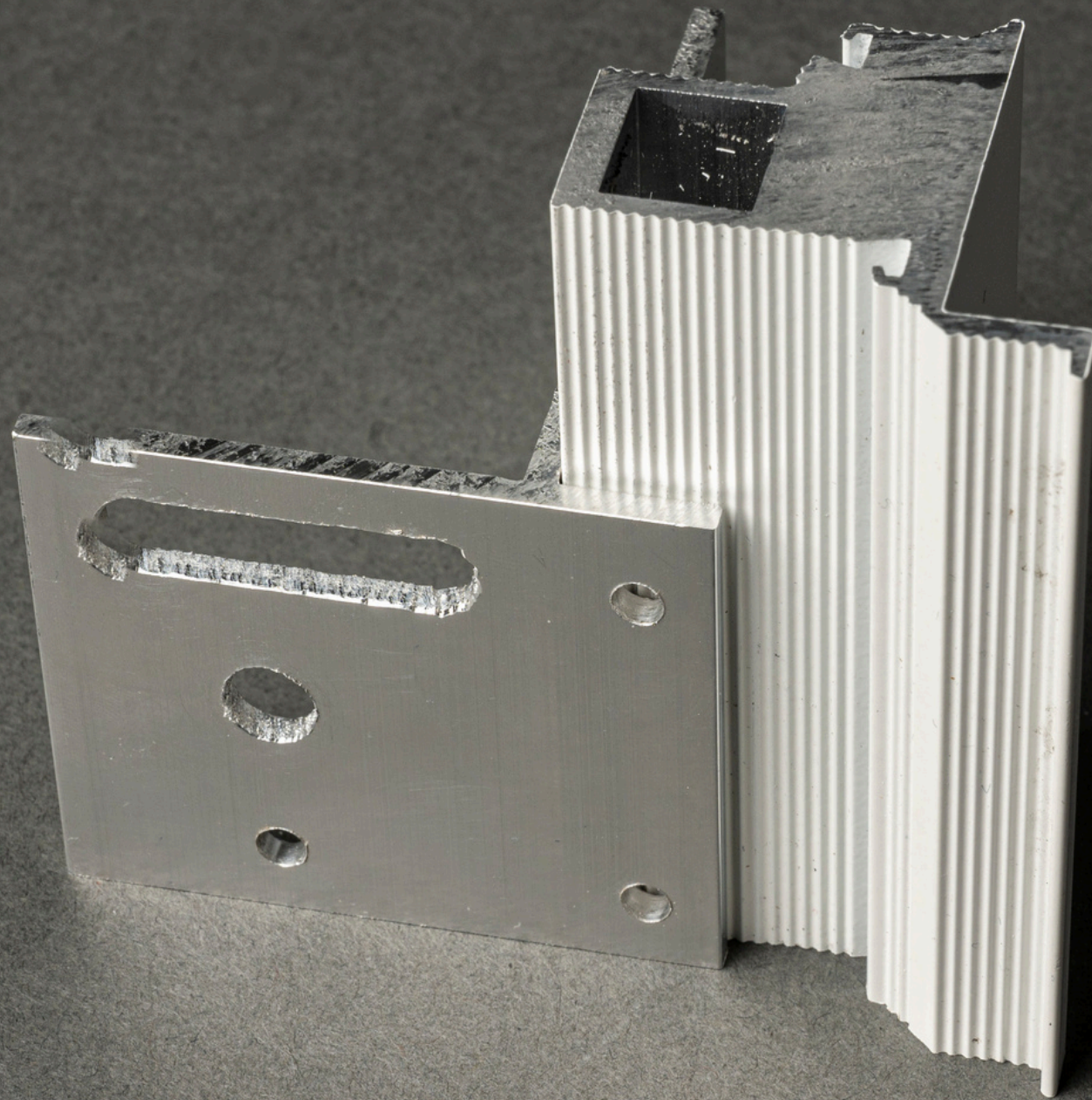
simi-lar 44
Door system
Standardized element

Technical drawings

simi-lar 44 Standardized element dimensions

Dimensioning simi-lar 44	Width in mm					Height in mm			
Nominal size	610	735	860	985	1110	1985	2110	2235	2360
Construction dimension (according to DIN 18100)	635	760	885	1010	1135	2010	2135	2260	2385
Outer frame dimension (plus 3 mm mounting bracket on both sides)	619	744	869	994	1119	2000	2125	2250	2375
Door leaf dimension	547	672	797	922	1047	1957	2082	2207	2332
Clearance dimension	530	655	780	905	1030	1955	2080	2205	2330





Product information

Frame and door leaf available separately

Aluminum profile frame, can be used for push and pull / white matt powder-coated RAL 9016

Suitable for solid and drywalls

Door leaf thickness 44 mm / 1.7 inch white matt lacquered RAL 9016 without locking holes

Included in the accessory package: magnetic lock in BB, WC or PZ, concealed hinge system / 3-dimensionally adjustable, velour nickel-plated

2 x assembly aids to maintain the frame rebate dimensions

6 x assembly brackets for easy installation

Stainless steel strike plate - adjustable

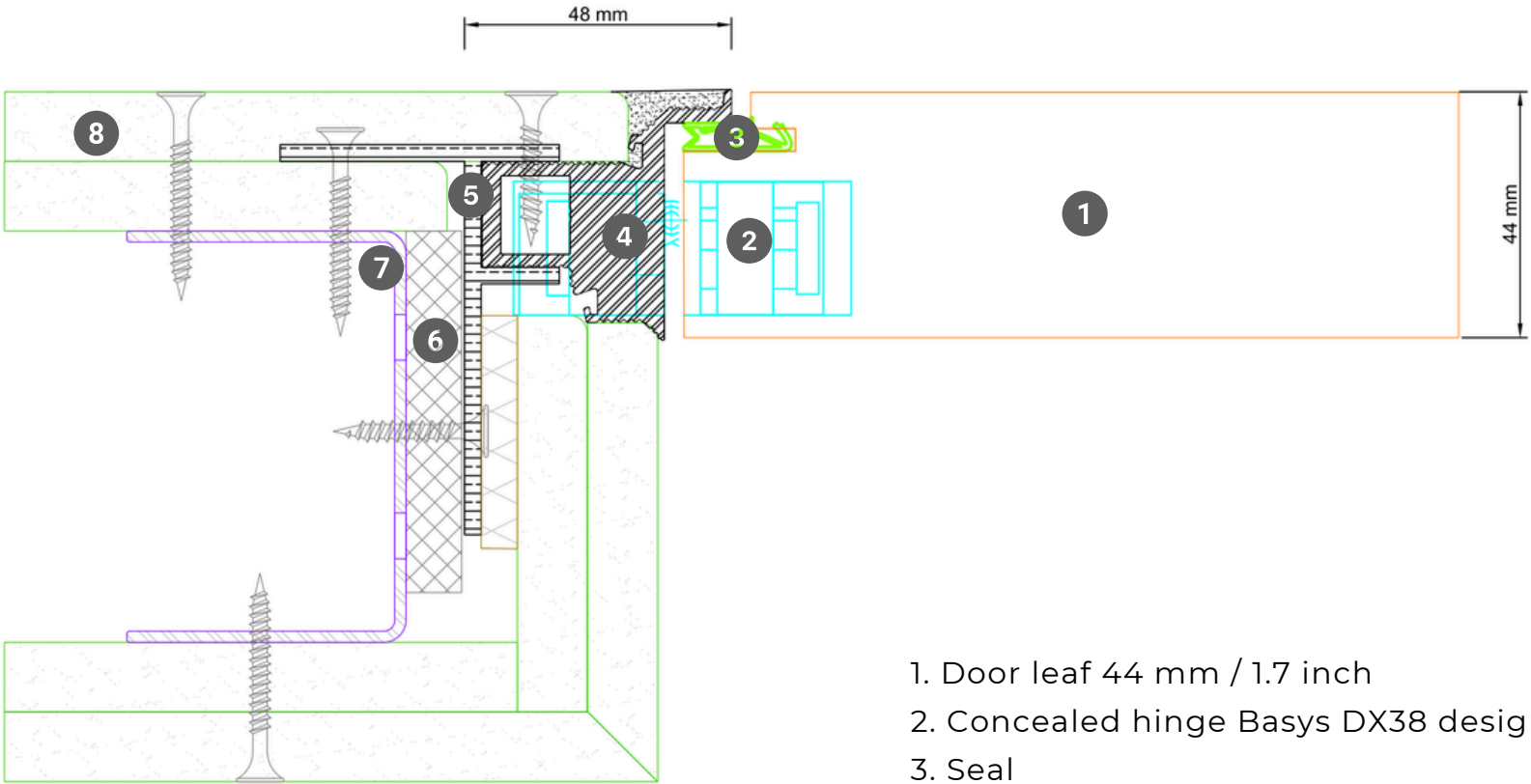
Rubber seal white

Optional accessories: plaster nets for solid walls, rubber seals, and black hinges and locks

Available at short notice

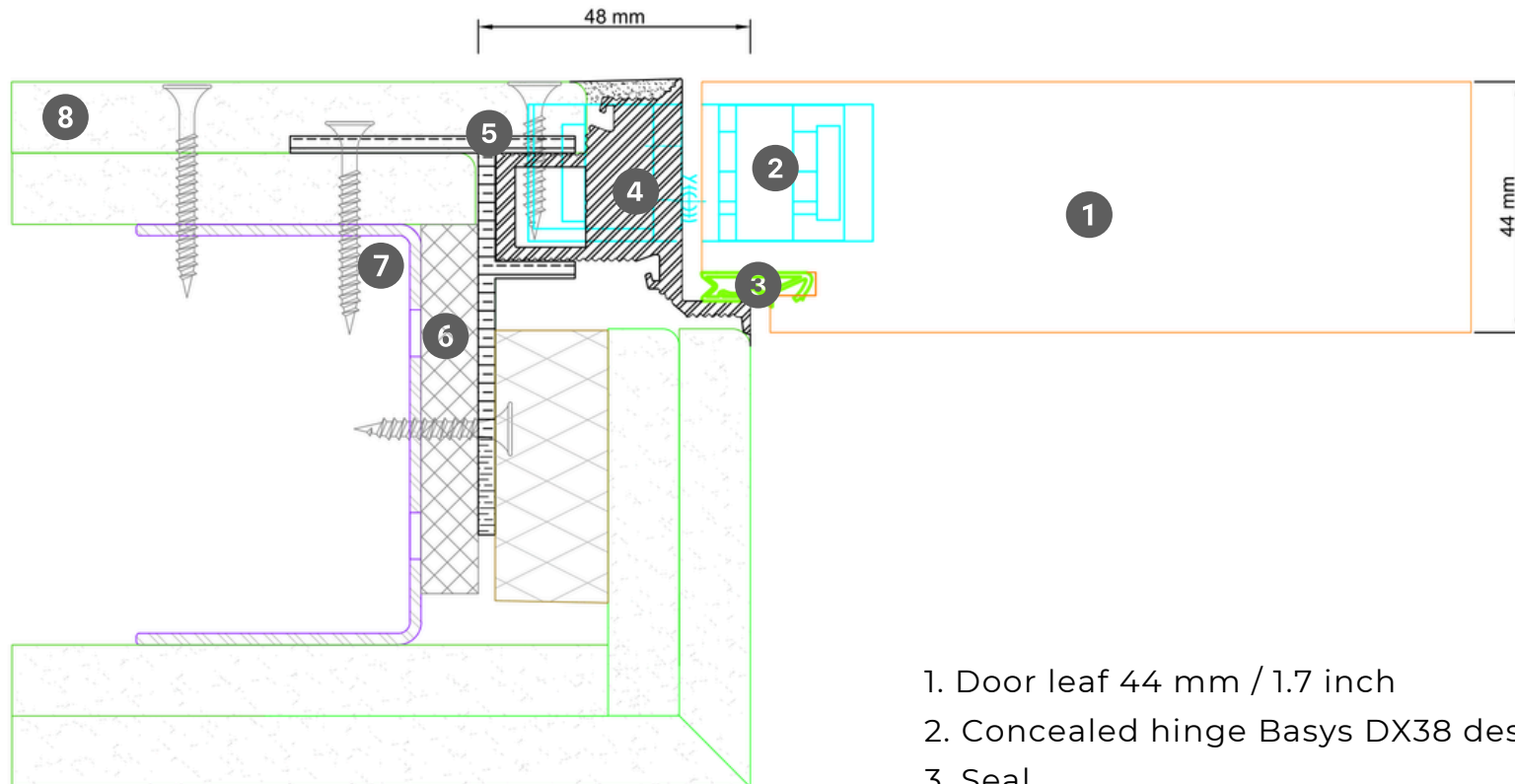
simi-lar 44

Profile variant push in drywall construction



- 1. Door leaf 44 mm / 1.7 inch
- 2. Concealed hinge Basy's DX38 design
- 3. Seal
- 4. simi-lar 44 frame installed as push
- 5. Mounting bracket 6 pieces
- 6. Mounting spacer
- 7. Reinforced drywall profile
- 8. Plasterboard 12.5 mm / 0.49 inch

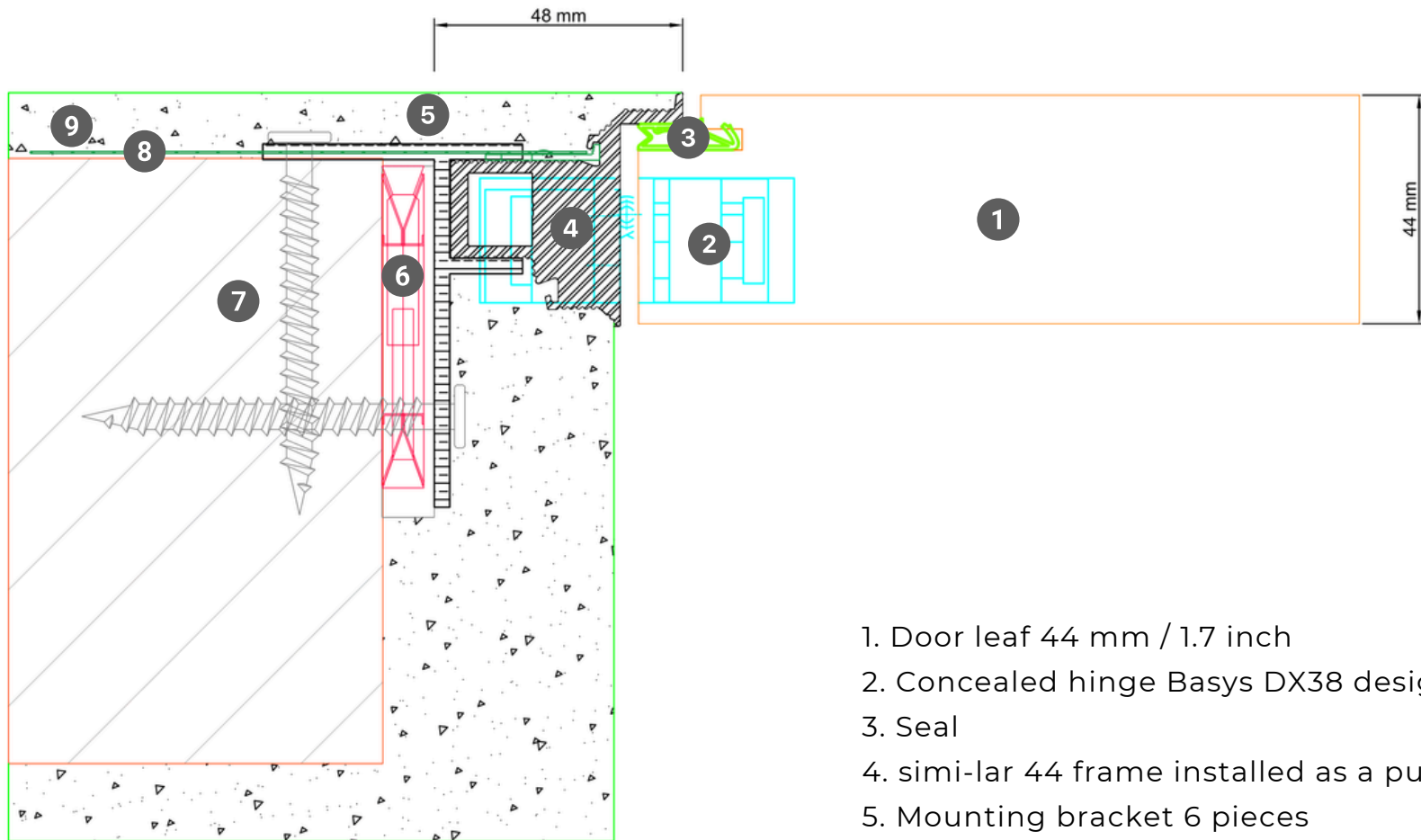
simi-lar 44 Profile variant pull in drywall construction



1. Door leaf 44 mm / 1.7 inch
2. Concealed hinge Basys DX38 design
3. Seal
4. simi-lar 44 frame installed as a pull-out
5. Mounting bracket 6 pieces
6. Mounting spacer material
7. Reinforced drywall profile
8. Plasterboard 12.5 mm / 0.49 inch

simi-lar 44

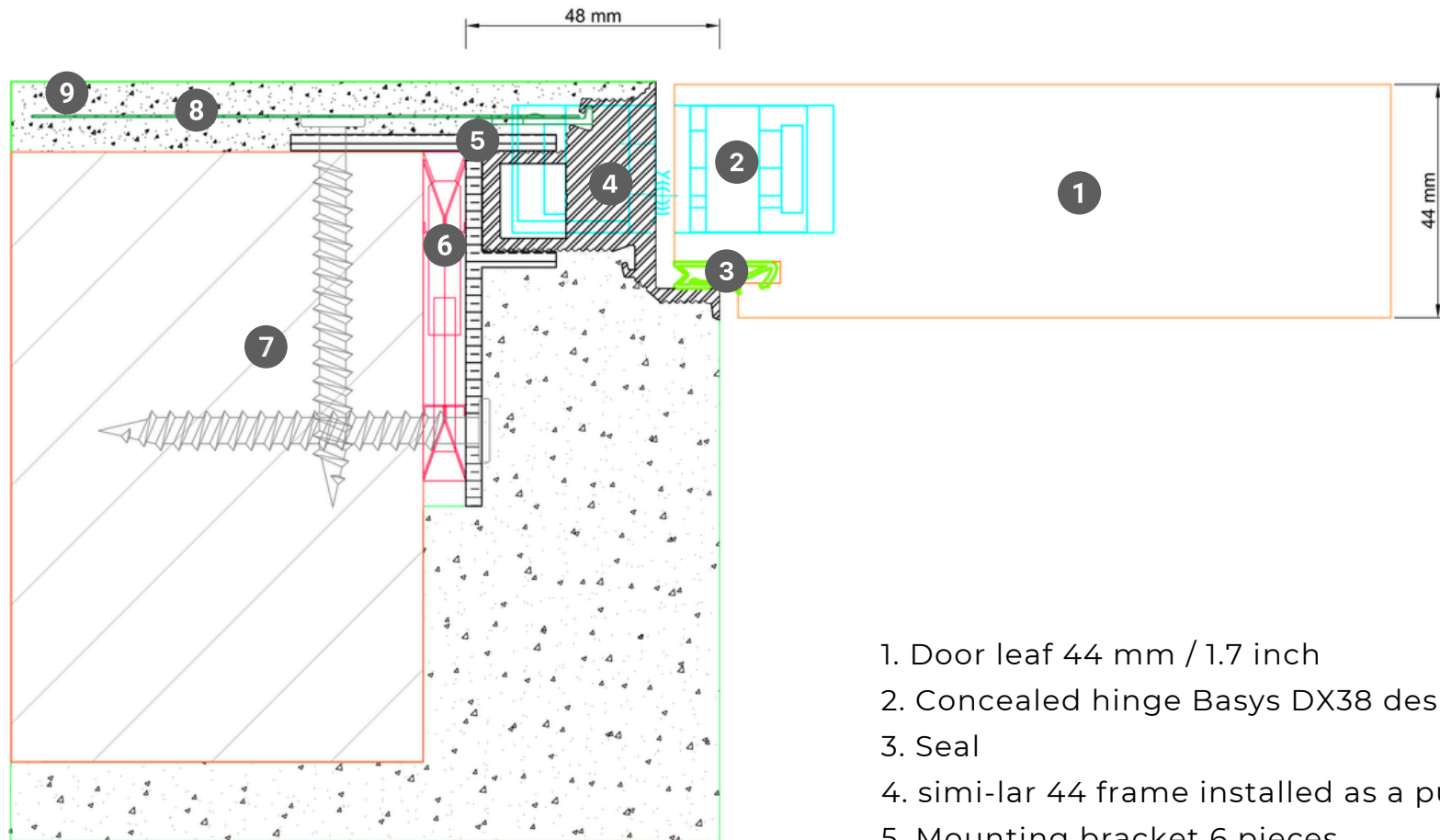
Profile variant push in solid construction



1. Door leaf 44 mm / 1.7 inch
2. Concealed hinge Basyx DX38 design
3. Seal
4. simi-lar 44 frame installed as a push
5. Mounting bracket 6 pieces
6. Mounting spacer material
7. Brickwork
8. Clickable plaster and reinforcement fabric
9. Plaster 15 mm / 0.59 inch

simi-lar 44

Profile variant pull in solid construction



1. Door leaf 44 mm / 1.7 inch
2. Concealed hinge Basys DX38 design
3. Seal
4. simi-lar 44 frame installed as a pull
5. Mounting bracket 6 pieces
6. Mounting spacer material
7. Brickwork
8. Clickable plaster and reinforcement fabric
9. Plaster 15 mm / 0.59 inch



simi-lar

Sliding door system



simi-lar **Sliding door system**

Sliding doors are a space-saving and elegant solution for modern interior design. They separate or connect rooms without requiring additional space in the room for the door itself—ideal for small rooms or open-plan living concepts. In addition, they offer an aesthetic and functional solution that perfectly fits into modern room concepts while also saving space.

Our sliding doors are characterized by self-cleaning carriages that allow easy and long-lasting running. The soft-close mechanism on both sides ensures standard comfort.

simi-lar

Sliding door system

Historical background

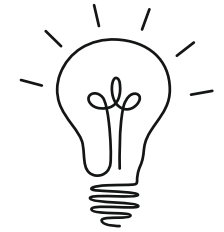
Sliding doors were already used by the Romans to divide rooms flexibly. In architecture, they gained increasing popularity from the 19th century onwards, mainly due to their space-saving design.

Modern utilization

Today, sliding doors are a popular choice in modern interiors because they save space and can be used flexibly, especially in small apartments or open-plan spaces.



simi-lar **Sliding door system**



The sliding door system, consisting of a two-part system combination of a supporting profile and a unique sound-insulated running rail.

The running rail can be removed for your convenience at any time if necessary.

The supporting profile always remains part of the ceiling when installed. The self-cleaning roller carriage technology and the individually mounted rollers ensure quiet and long-lasting operation.

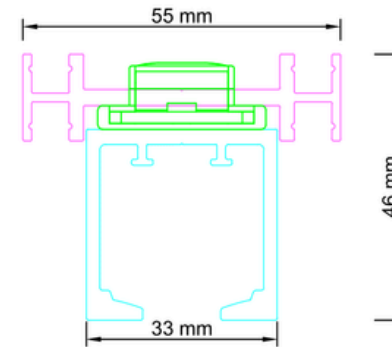
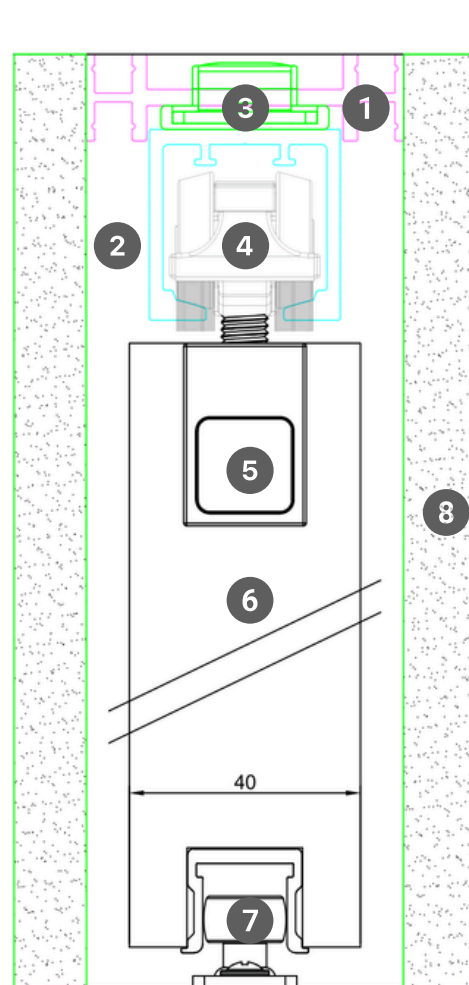


simi-lar
Sliding door

Technical drawings

similar

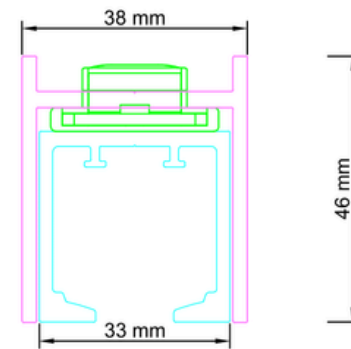
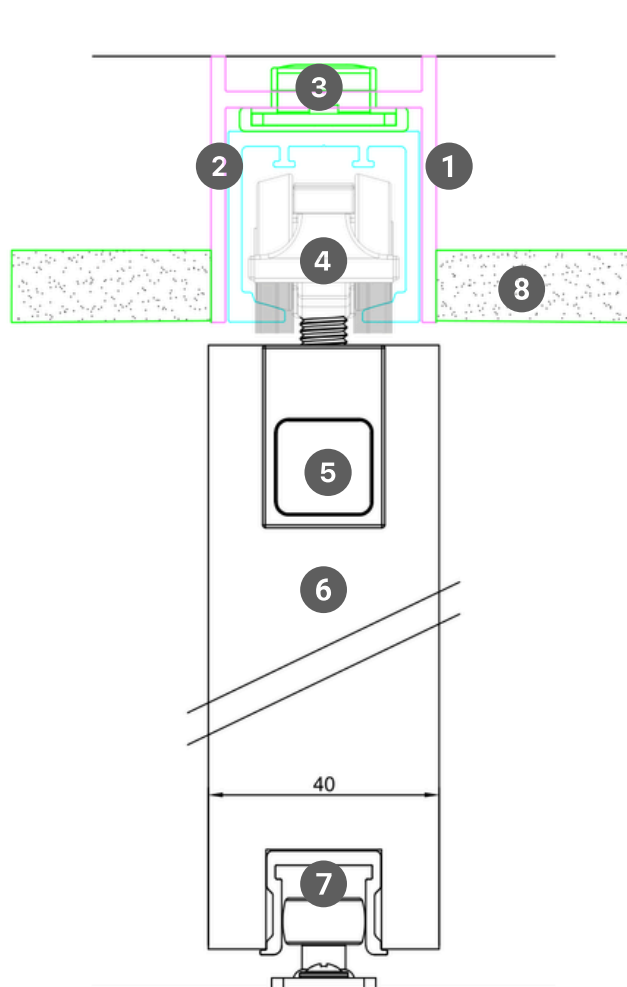
Sliding door system running in the wall



1. Subframe profile
2. Running rail
3. Rubberized hooks
4. Carriage with damper
5. Milled-in fitting
6. 40 mm / 1.6 inch door panel
7. Rattle-proof floor guide
8. On-site wall pocket

simi-lar

Sliding door system running in the ceiling



1. Substructure profile
2. Running rail
3. Rubberized hooks
4. Carriage with damper
5. Milling fitting
6. Door panel 40 mm/ 1.6 inch
7. Rattle-proof floor guide
8. Ceiling connection



simi-lar

Flush-mounted skirting boards



simi-lar **Flush-mounted skirting** **boards**

Flush-mounted skirting boards ensure a seamless transition between wall and floor and create a modern, minimalist look. They blend harmoniously into the room concept and avoid visible edges.

Our skirting boards are characterized by precise handling and high quality. They fit perfectly into the wall and offer an elegant long-lasting solution for contemporary interiors.

Product information

Aluminum round profile ZERO TOP, 12.5mm / 0.49 inch x
60mm / 2.4 inch height, 2000mm / 78.7 inch length

ZERO BASE aluminum mounting plate, each
1250mm / 49.2 inch

Longitudinal, internal, external and frame connectors
made of plastic

Cover strips 58mm / 2.3 inch high, 2500mm / 98.4 inch long,
standard white RAL 9016 matt

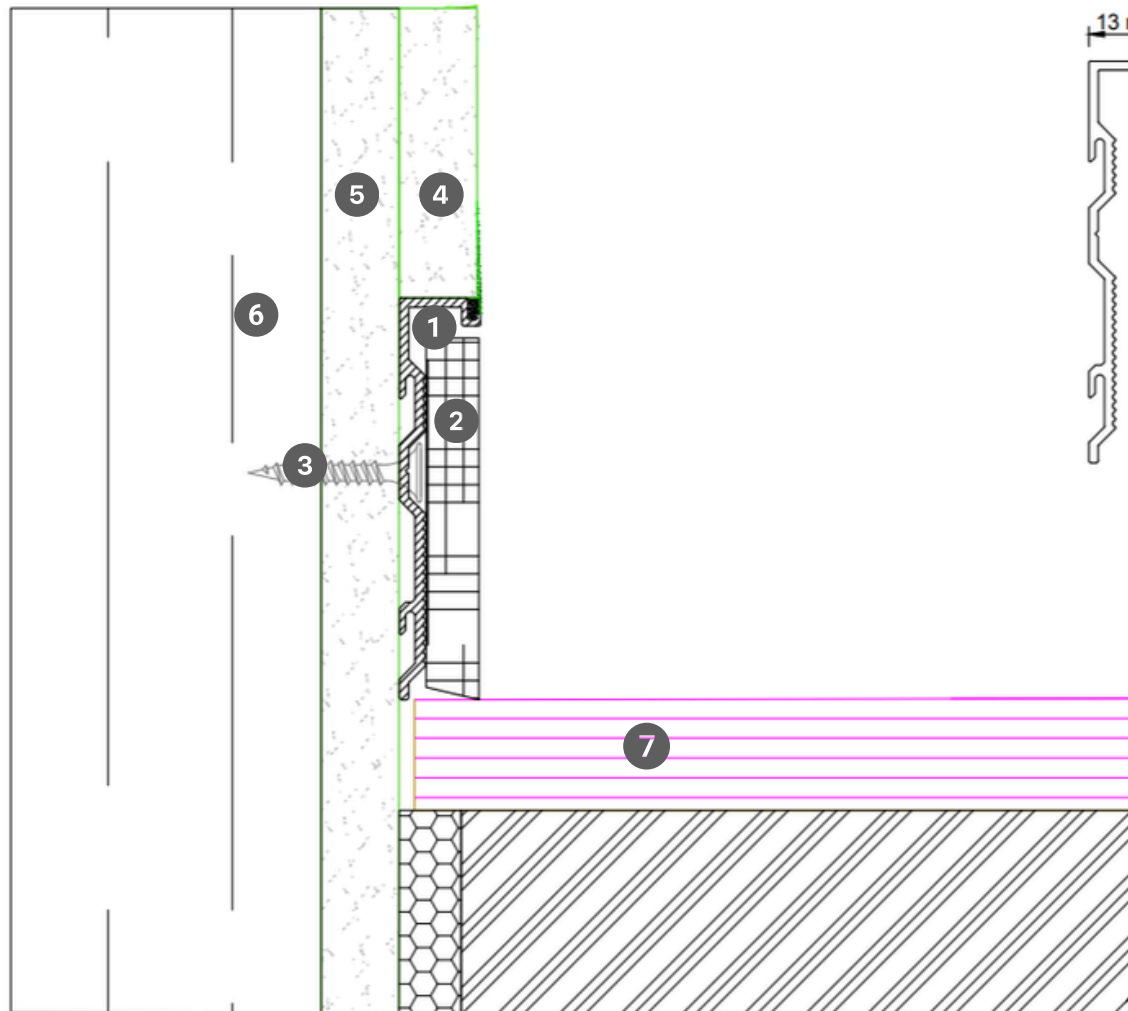


simi-lar
Flush-mounted skirting boards

Technical drawings

simi-lar

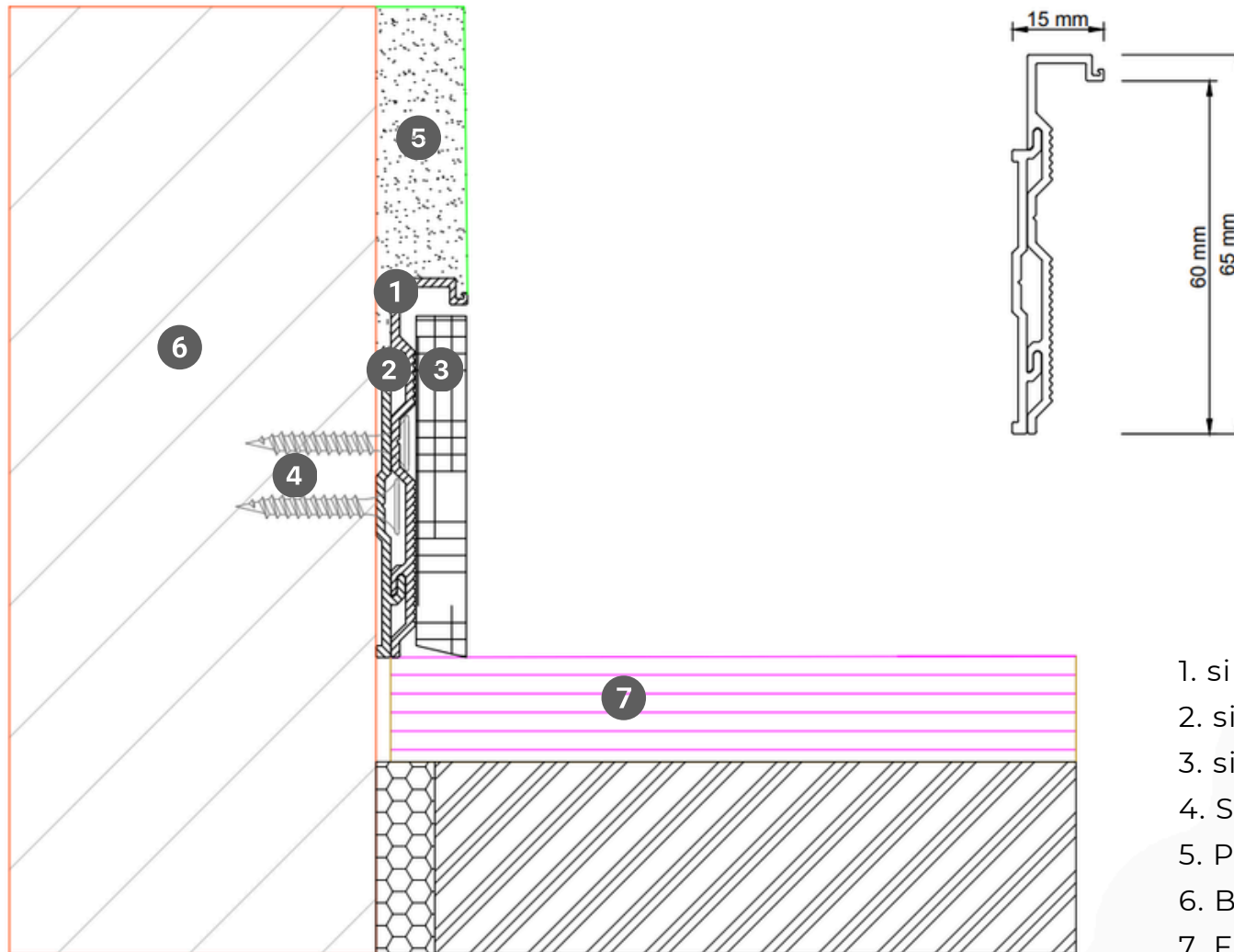
Flush-mounted skirting board drywall construction



1. simi-lar top profile
2. simi-lar cover strip
3. Screw connection
4. Second planking GKB 12.5 mm / 0.5 inch
5. First planking
6. Substructure
7. Floor

simi-lar

Flush-mounted skirting board solid construction



1. simi-lar Top Profile
2. simi-lar Base Profile
3. simi-lar Cover Profile
4. Screw fittings
5. Plaster 15 mm / 0.59 inch
6. Brickwork
7. Floor



simi-lar

Shadow gap profile



simi-lar **Shadow gap profile**

Shadow gap profiles ensure a discreet transition between wall and ceiling and create a modern, minimalist look. They blend harmoniously into the room concept and create a floating effect.

Our shadow gap profiles define a clear line between the wall and the floor and create an aesthetic solution for sophisticated rooms.

Product information

Aluminum profile for shadow gap 15 x 8 mm

Length 2000 mm / 78.7 inch

Longitudinal and corner connectors made of plastic

Profile in natural aluminum and horizontal leg for material intake of 12.5 mm / 0.5 inch

Profile in natural aluminum and powder-coated in white RAL 9016 matt or black RAL 9005 matt

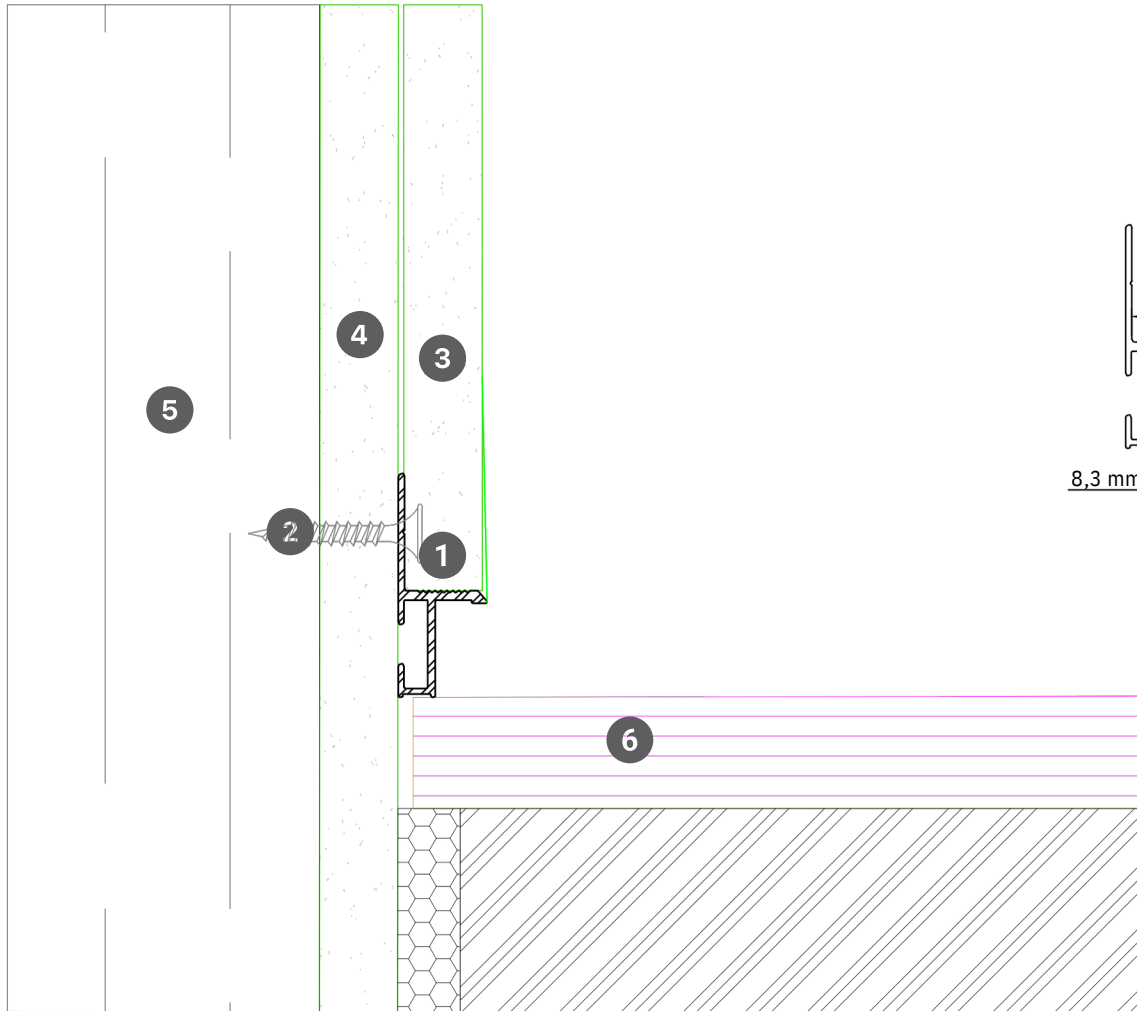


simi-lar
Shadow gap profile

Technical drawings

simi-lar

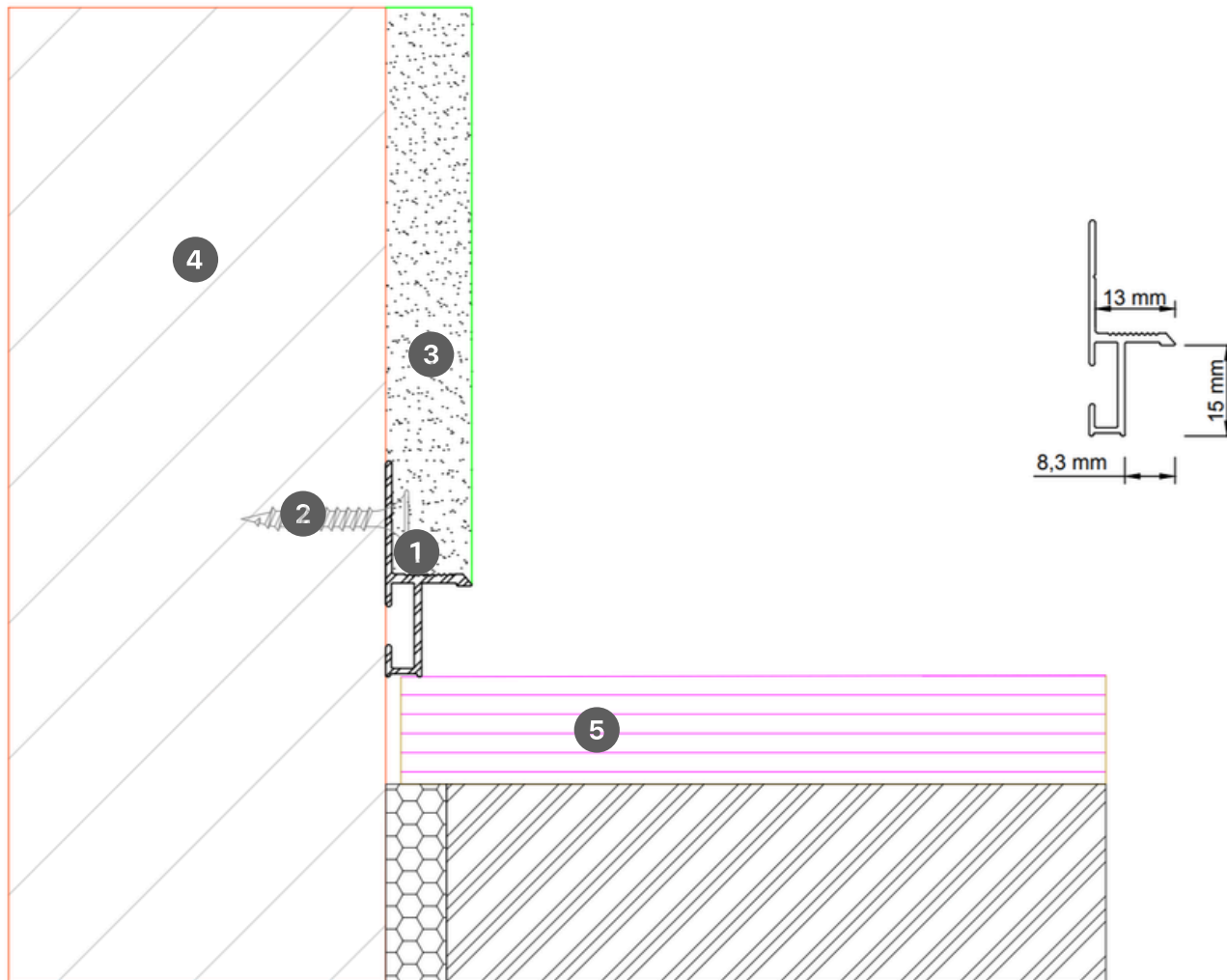
Shadow gap profile for drywall construction



1. Shadow gap profile
2. Screw connection
3. Plasterboard 12.5 mm / 0.49 inch
4. Substructure plate
5. Substructure
6. Floor

simi-lar

Shadow gap profile solid construction



1. Shadow gap profile
2. Screw connection
3. Plaster 15 mm / 0.59 inch
4. Brick wall
5. Floor



Impressions







Project
single-family house

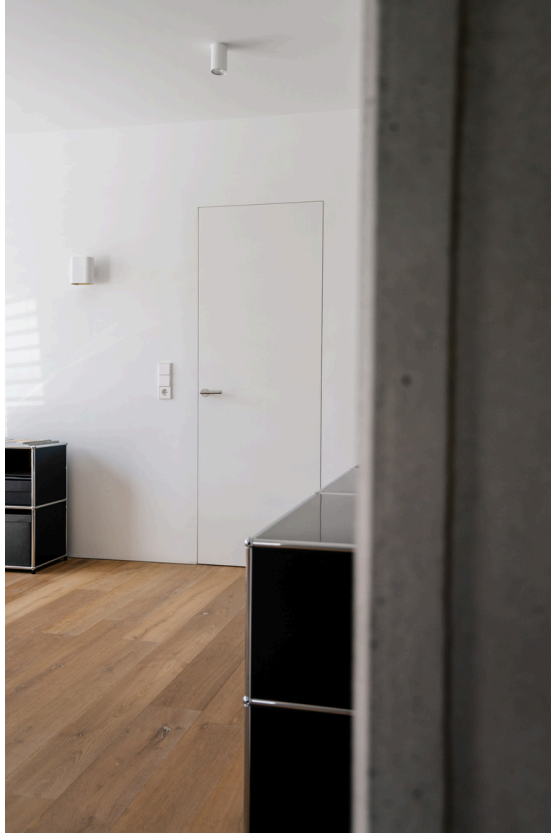
Location
Stuttgart

Execution
wooden.stuff

Product
simi-lar 54
ceiling high

simi-lar 44 standard element

Year of construction
2024







Project

Villa

Location

Wiesbaden

Architect

Thomas Hessler Architects

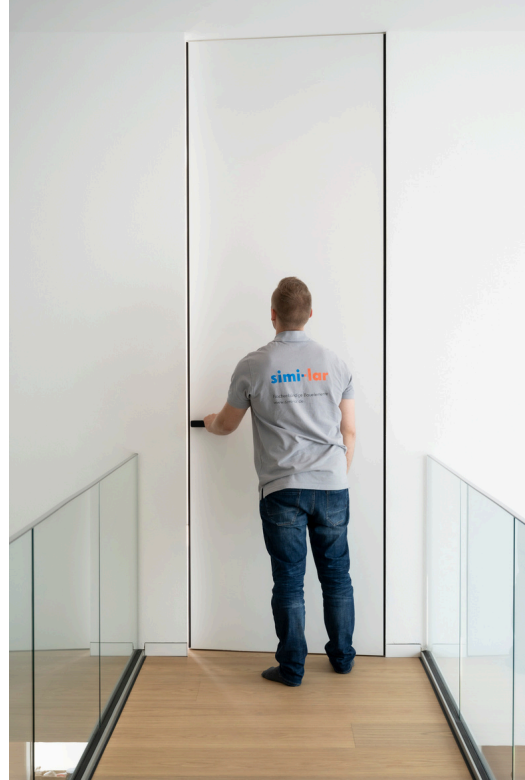
Product

semi-lar 54 Ceiling high

Year of construction

2022





Project
single-family house

Location
Stuttgart

Architect
Architekt Schäffer

Product
simi-lar 54 ceiling-high
simi-lar flush skirting board

Year of construction
2022



BYREDO
ROSE

GEL NETTOYANT POUR LES MAINS
HAND WASH
150 ml / 5.2 fl. oz.

BYREDO
VELVET HAZE
EAU DE PARFUM



Project
Penthouse

Location
Hamburg

Architect
Reimann Architecture

Product
simi-lar 54 primed
simi-lar black shadow gap profile

Year of construction
2022







Project
urban villa

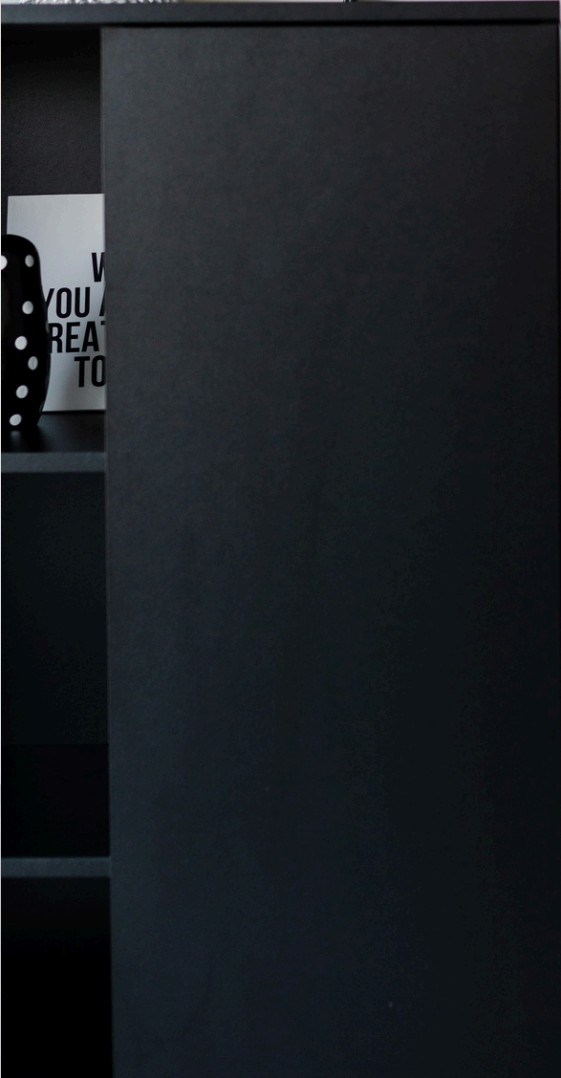
Location
Cologne

Execution
Studio space

Product
simi-lar 54 wet and humid room door leaf

Year of construction
2019







Project

Penthouse

Location

Frankfurt

Architect

Margarita Interior Designer

Product

simi-lar 54 lacquered

Year of construction

2022







Project

Penthouse

Location

Munich

Execution

Zdovc Carpentry

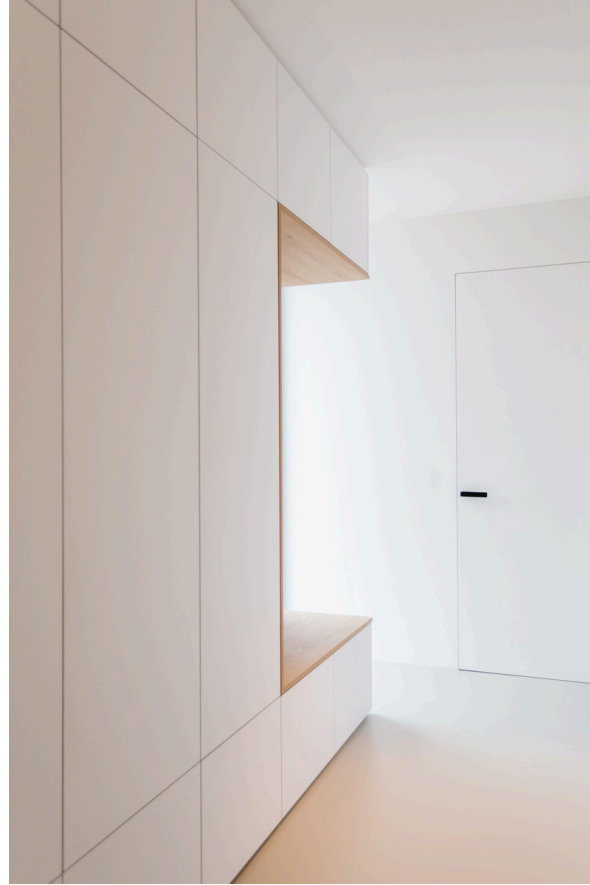
Product

simi-lar 54 lacquered
simi-lar flush skirting board

Year of construction

2024





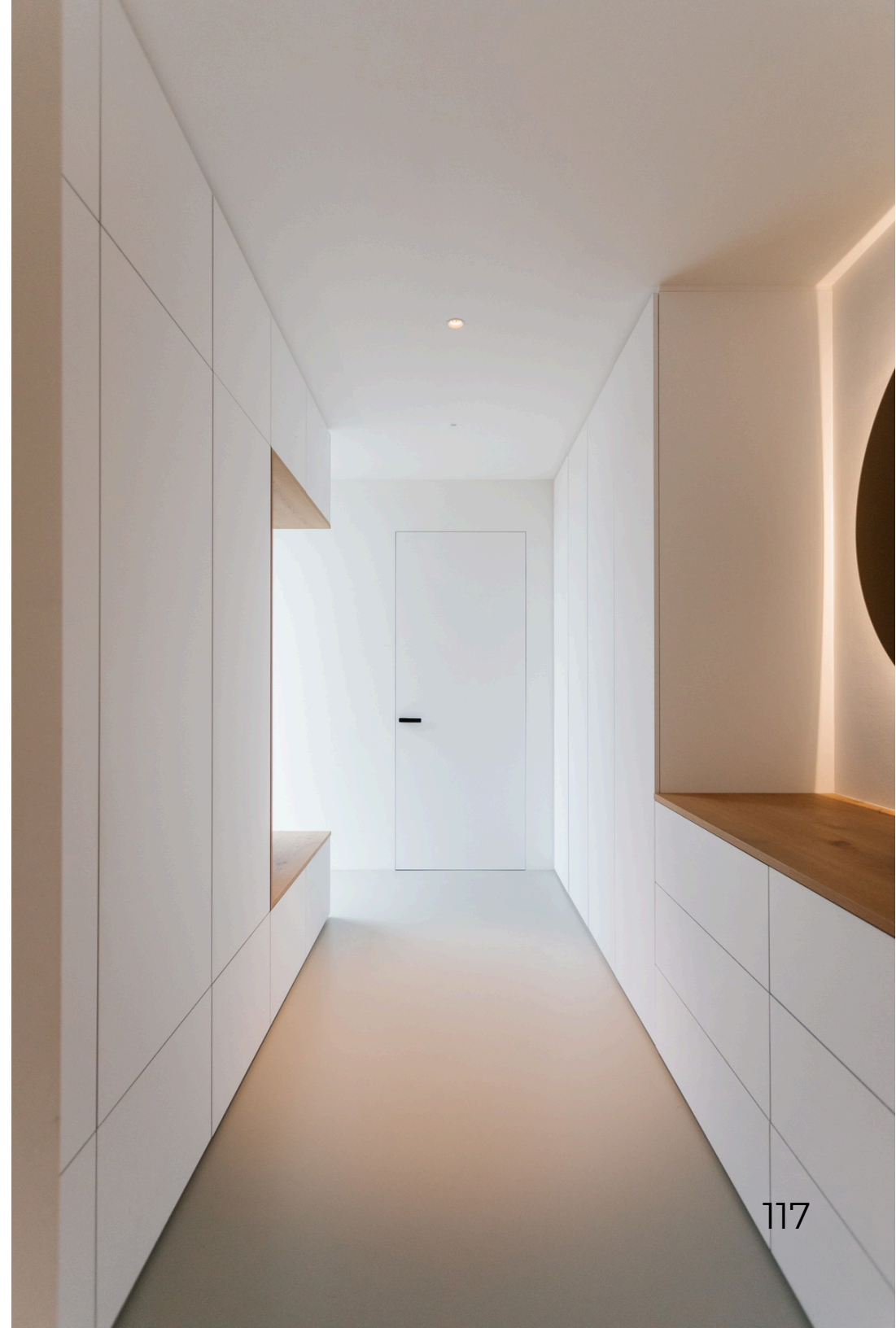
Project
Villa

Location
Würzburg

Execution
wooden.stuff

Product
simi-lar 54 painted

Year of construction
2023





Project
Villa

Location
Frankfurt

Architect
wooden.stuff
ARTIMITRO INTERIORS

Product
simi-lar 54 lacquered
simi-lar shadow gap

Year of construction
2024







Project

apartment building

Location

Munich

Architect

Richarz Schulz Verem Architekten

Product

simi-lar 54 real wood veneer american walnut
simi-lar flush skirting with black tile

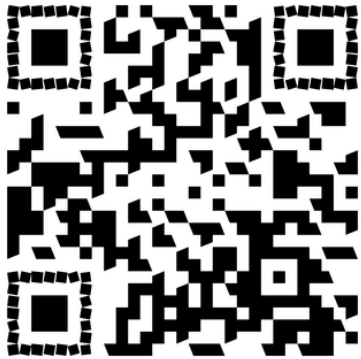
Year of construction

2018

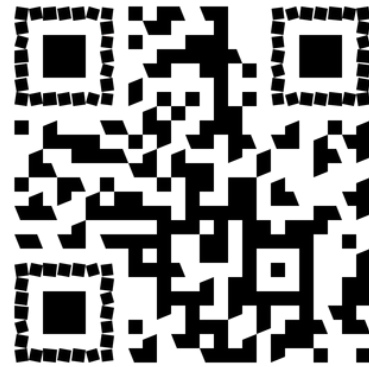




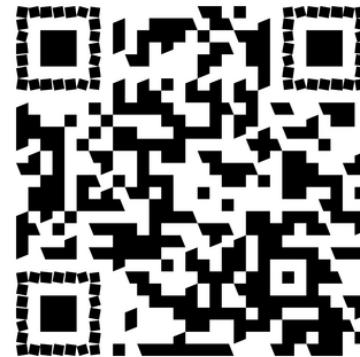
Assembly instructions



Downloads



Website



Contact

Legal notice.

All images, texts and other drawings are protected by copyright and are the property of Barthel GmbH.

Credits

This book was created by **erfolgseite.de**, a company that specializes in professional website creation and online marketing.

erfolgseite.de

E-Mail: info@erfolgseite.de

Telephone: +49 176 100 33488

Contact

Website: <https://simi-lar.de>

E-Mail: info@simi-lar.de

Telephone: +49 8067 8819295

You can book a telephone appointment on Calendy:

<https://simi-lar.de/kontakt>

